



केंद्रीय शैक्षिक प्रौद्योगिकी संस्थान  
Central Institute of Educational Technology  
राष्ट्रीय शैक्षिक अनुसंधान और प्रशिक्षण परिषद्  
National Council of Educational Research and Training



# Webinar Series on AI Tools in Education

## NotebookLM

30<sup>th</sup> October, 2025

**Ms. Sangeeta Gulati**

(National ICT Awardee, 2016)

Head of Mathematics Department

Sanskriti School, Chanakyapuri ,


New Delhi



# NotebookLM

Understand anything with  
NotebookLM, *your personalized*  
AI expert on the information that  
matters most to you





# Drowning in documents?

# Understand anything with NotebookLM:

## Your personalized AI expert on the information that matters most to you



When you ask NotebookLM questions or ask it to generate content, it only uses information from sources you provide. Think of it as an expert on your specific documents.



Upload your sources (like strategy plans, education standards, lecture notes, and course readings) and NotebookLM can answer questions and generate summaries, lesson plans, study guides, discussion questions, and quizzes – all with in-line citations to ensure accuracy.



NotebookLM is multilingual. You can upload sources from over 50 supported languages, including a combination of different languages, and then generate content in any of those languages.

The screenshot displays the NotebookLM interface for a topic titled "Science in motion". On the left, a "Sources" panel lists several documents, including "Action and Reaction", "Balanced and Unbalanced ds", "Understanding Speed, Velocity and...", "Simple Machines Make Work Easier...", "Momentum Mania: Investigating th...", "Newton's Three Laws...", and "Momentum Mania: Investigating th...". The central "Chat" window shows a conversation with a "Science in Motion" header, a date "6 sources • 5 hrs ago", and a paragraph of text discussing fundamental principles of physics. Below the text are buttons for "Add note", "Audio Overview", and "Briefing doc". At the bottom of the chat, there is a text input field "Ask a question or make a request..." and a "7 sources" button. On the right, a "Studio" panel shows an "Audio Overview" section with a "Deep dive conversation" button and a "Notes" section with an "Add note" button and a list of notes including "Cats always land on their feet", "Ideas for paper on gravity", "This week's physics test", and "How magnets work".

NotebookLM is available to all users of Google Workspace for Education

Curated by Sangeeta Gulati

# NotebookLM

Free for individuals to get started

- ✓ Built with the latest Gemini models
- ✓ Upload PDFs, websites, Google Docs and Slides, YouTube URLs, and more
- ✓ Create one-click summaries, FAQs, timelines, and briefing docs
- ✓ Generate Audio Overviews and listen on-the-go
- ✓ Ask questions for deeper insights and get answers with citations

# NotebookLM

Free for individuals to get started

- ✔ Built with the latest Gemini models
- ✔ Upload PDFs, websites, Google Docs and Slides, YouTube URLs, and more
- ✔ Create one-click summaries, FAQs, timelines, and briefing docs
- ✔ Generate Audio Overviews and listen on-the-go
- ✔ Ask questions for deeper insights and get answers with citations

# NotebookLM in Pro

⚡ Everything in NotebookLM, plus the following:

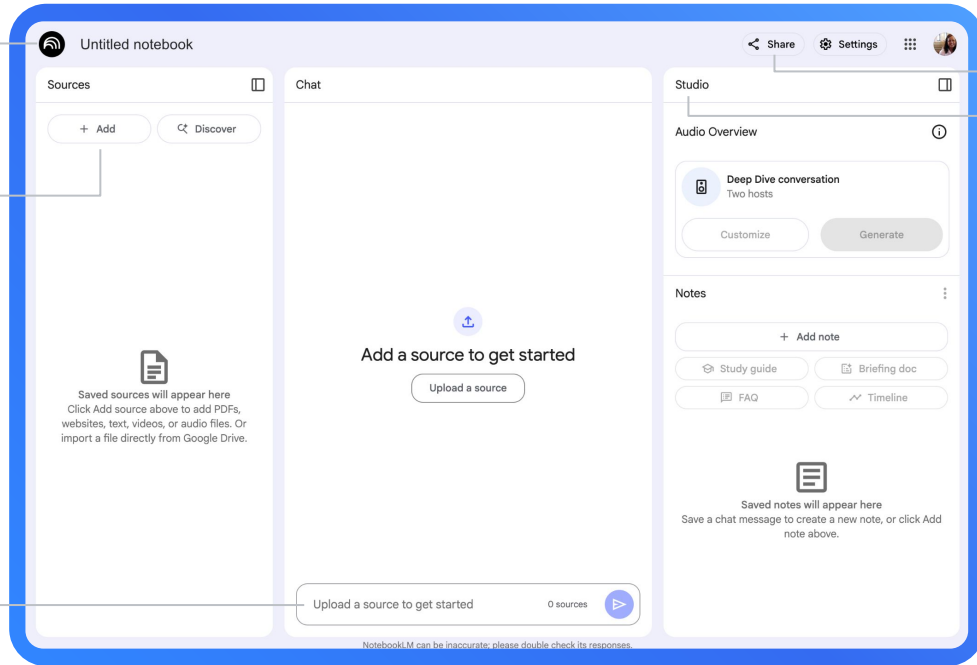
- ✔ Get 5x more Audio and Video Overviews, notebooks, queries and more
- ✔ Access to premium features
- ✔ Create shared notebooks for your team and get usage analytics
- ✔ Additional privacy and security

# Anatomy of NotebookLM

Give your notebook a name

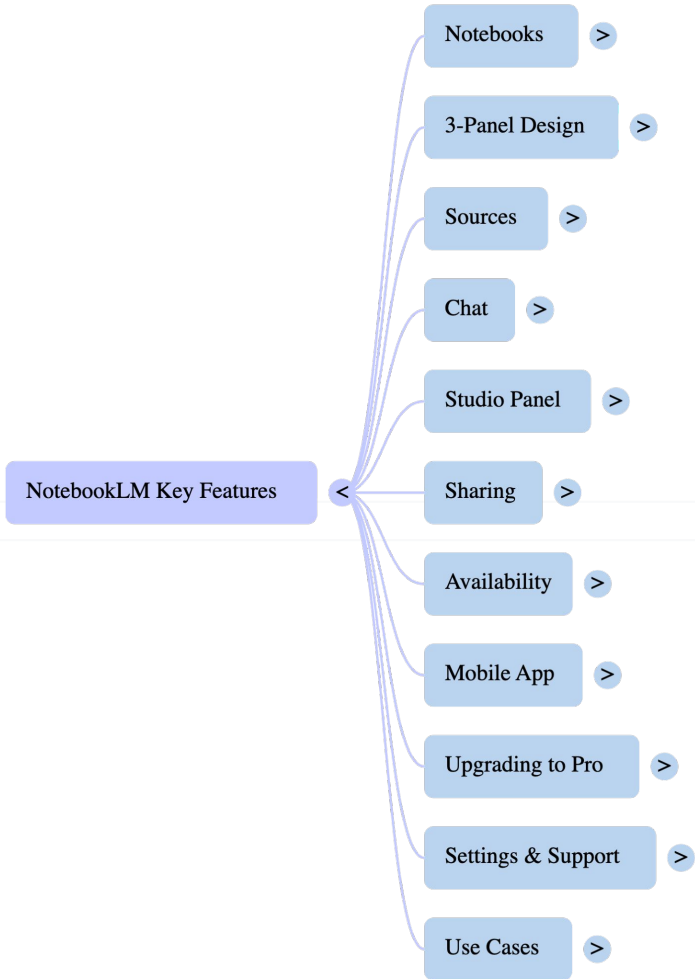
Upload your sources

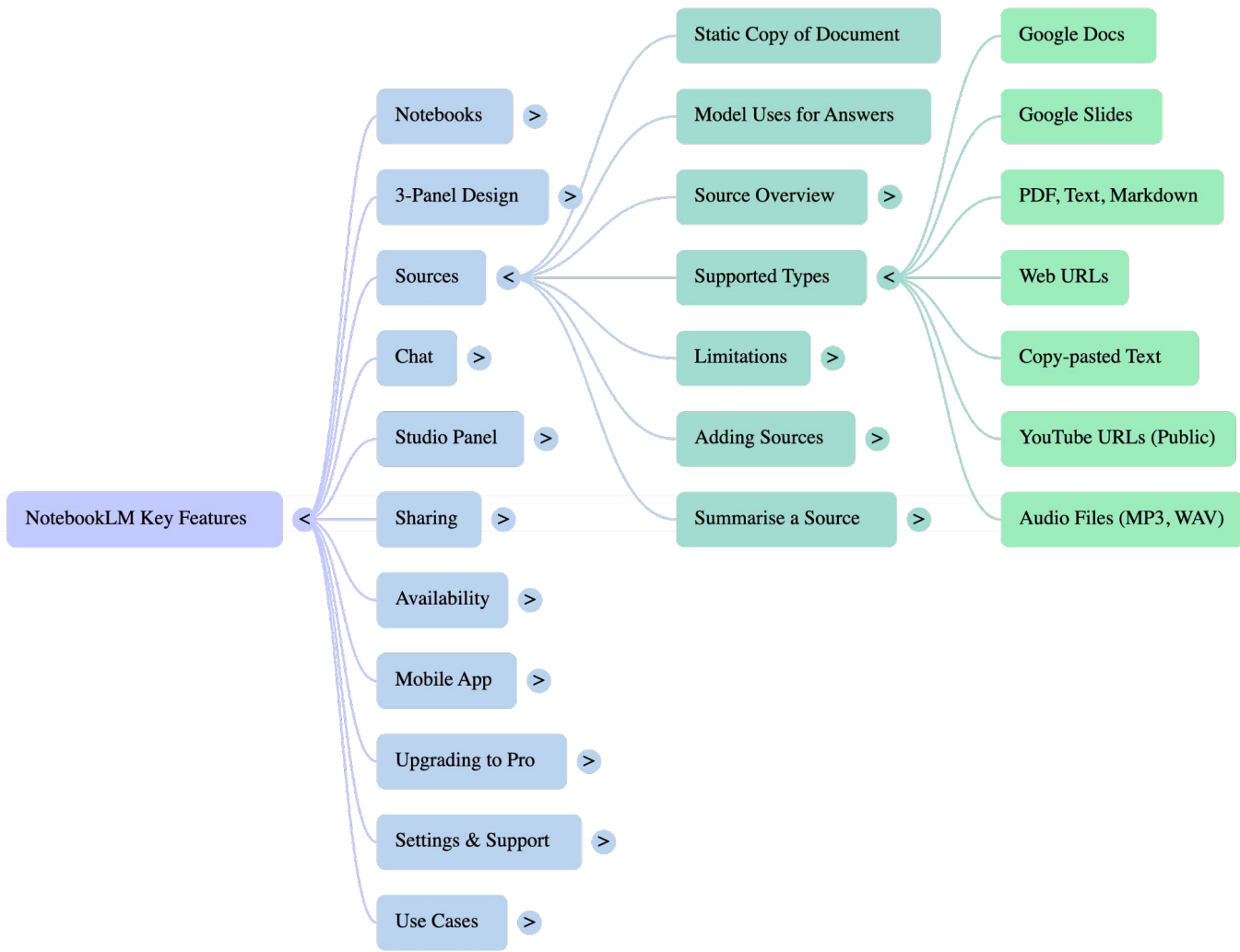
Ask questions of your sources

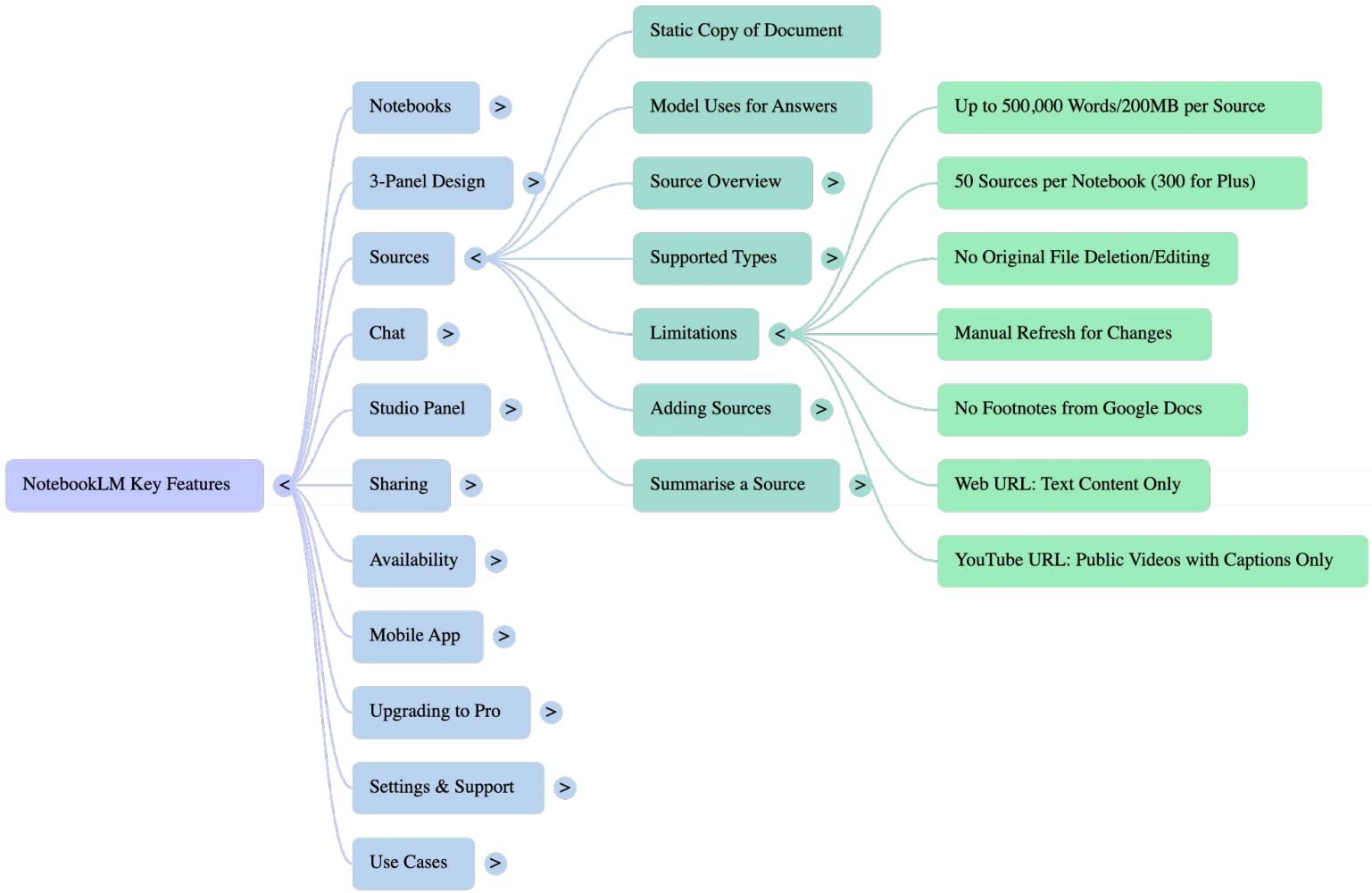


(Optional) Share your notebook with colleagues or students

(Optional) In the Studio panel, generate a podcast-style audio overview, study guide, FAQ doc, and more

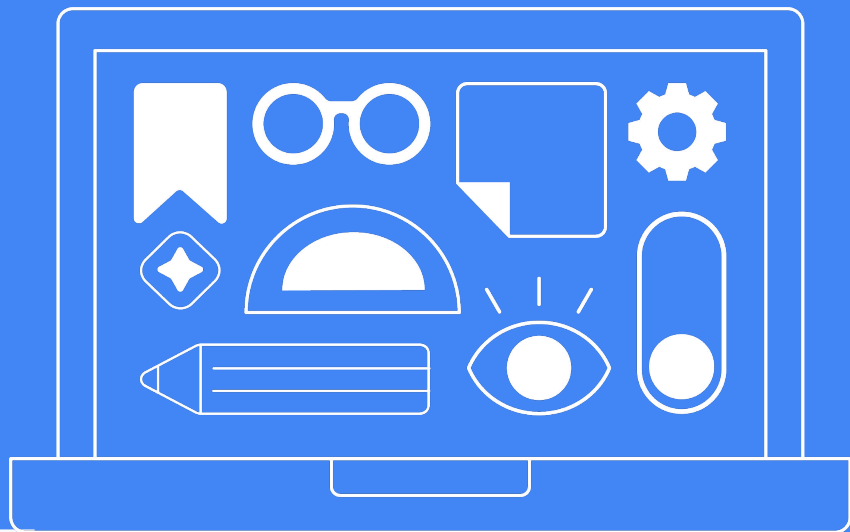




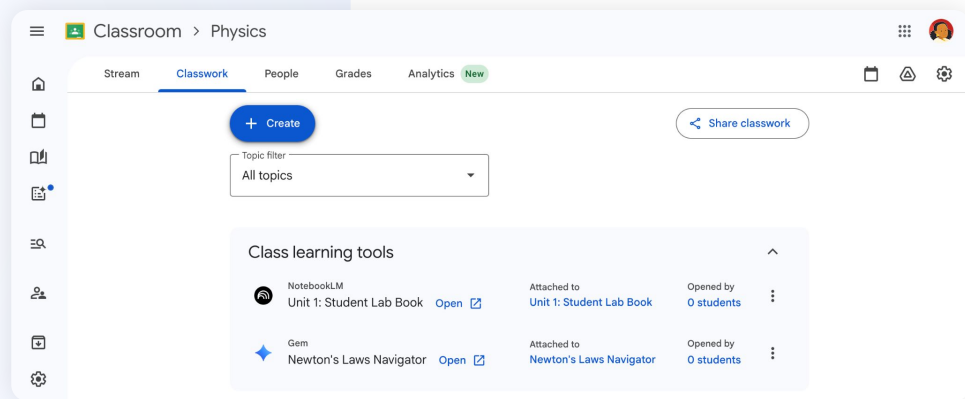


# Teacher-led AI learning experiences for students

Create and assign  
NotebookLM and Gems in  
Google Classroom



Educators can instantly create interactive AI learning experiences for students using NotebookLM and Gems right from Classroom, then assign them to students for extra practice, support, and learning opportunities



How to choose which to use

 NotebookLM

- **Source-grounded:** Generate content only from the materials you upload
- **Multimodal inputs and outputs:** Use various formats like text, PDFs, and videos as sources, and generate text summaries, visual Mind Maps, Visual Overviews, and podcast-style Audio Overviews
- **Personalized study aids:** Instantly create study guides, summaries, and quizzes from class notes
- **Easy differentiation:** Helps create leveled activities and materials for diverse learners

 Gems

- **Create your own AI experts:** Create personalized versions of Gemini for Education to act as experts on any topic, informed by your added materials and the web
- **Scaffolded support:** Offer specific help, like a reading assistant or a research assistant
- **Targeted practice:** Allow students to use Gems for focused review with simple explanations and practice problems

# Posting to the Classwork tab

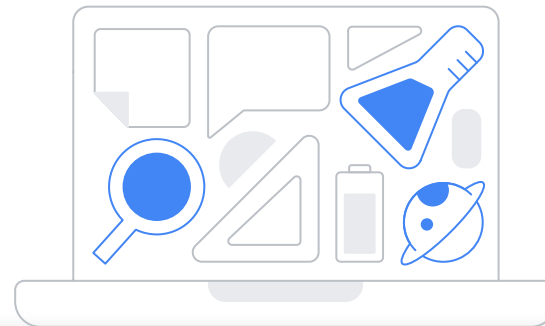
You can post a notebook or Gem as a highlighted, class-level resource for your students to easily access.

1. In the “**Classwork**” tab, click “**+ Create**” and select “**Material**.”
2. Add a title (for example, “Newton’s Laws Navigator”) and a brief description for your students.
3. Under “Attach,” select the **NotebookLM** or **Gem** icon and choose the specific resource you want to share. (You can also create a new resource if you haven’t already done so.)
4. Once attached, select the checkbox  next to “**Highlight at top of class**.”
5. Assign a topic and click “**Post**.” The material will now appear in its topic section and as a highlighted resource at the top of the Classwork tab.

The screenshot shows the 'Material' creation interface in Google Classroom. At the top right, there is a 'Post' button. The main form has a 'Title\*' field with the text 'Newton's Laws Navigator' and a '\*Required' label. Below it is a 'Description (optional)' field with the text 'Resources to help you study Newton's Laws of Motion.' The text editor includes bold (B), italic (I), underline (U), list (☰), and link (🔗) icons. Below the text editor, there is a section for attaching resources. It shows a blue star icon next to the text 'Newton's Laws Navigator' and 'Gem'. To the right of this, there is a yellow star icon and a checked checkbox next to the text 'Highlight at top of class'. Below this section, there are two columns of options: 'Attach' and 'Add-ons'. The 'Attach' column includes icons for Drive, YouTube, Create, Upload, and Link. The 'Add-ons' column includes icons for Newsela, IXL Learning, Edpuzzle, Sora by OverDrive Educa..., and BookWidgets. On the right side of the interface, there is a 'For' dropdown menu set to 'Physics', an 'Assign to' section with a 'New' tag and a button for 'All students', and a 'Topic' dropdown menu set to 'Newton's Laws of Motion'. At the bottom right, there is a '23/100' character count and a help icon (question mark).

💡 Pro tip

# Getting the most out of NotebookLM



## Upload quality sources

Your research files, outlines, notes, links to quality websites, key readings. Etc.



## Be specific

Ask clear, targeted questions.



## Explore generated content

Use the buttons for study guides, timelines, mind maps, audio overviews, and FAQs.



## Check citations

View which sources NotebookLM used for its answer.



## Click “Save to note”

Save key insights, draft outlines, and add your own thoughts.



## Iterate

Rephrase questions if you don't get the answer you need the first time around.





## Sangeeta Gulati

National ICT Award, 2016

Head of Mathematics Department  
Sanskriti School

Fulbright Distinguished Award, 2011  
Leader, GEG DelhiNCR  
Google Certified Trainer & Innovator



Google for Education  
Certified Innovator



Leader, GEG DelhiNCR



Google for Education  
Certified Trainer

