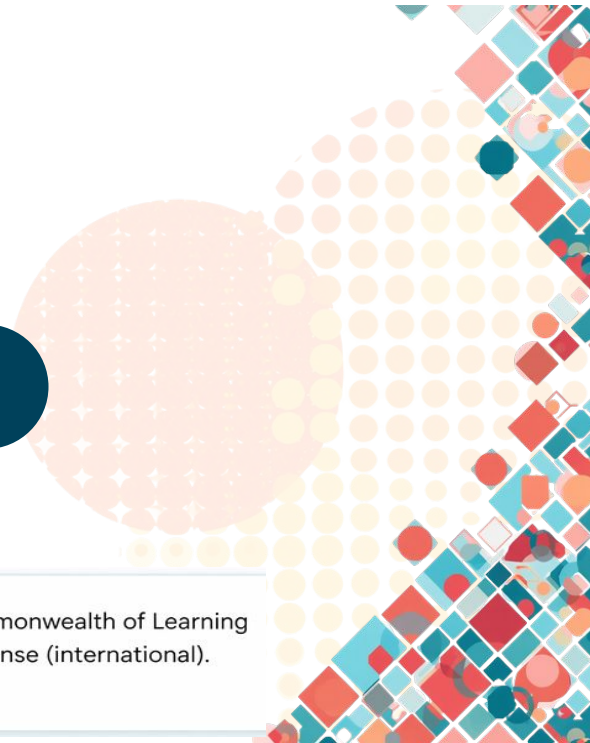


Blended Learning

Gaurav Singh
CIET-NCERT



This presentation is based on documents provided by Commonwealth of Learning under a Creative Commons Attribution-Share Alike 4.0 License (international).
<http://creativecommons.org/licenses/by-sa/4.0>



LEARNING MODALITIES

TRADITIONAL LEARNING

Teacher-centered,
face-to-face instruction,
fixed time/place



- Direct interaction with teacher
- Structured schedule
- Same pace for all students
- Classroom based
- Limited by time and location

ONLINE LEARNING

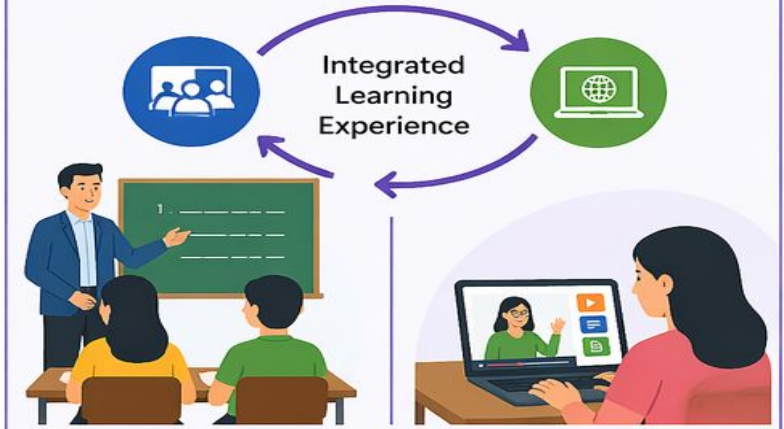
Technology-mediated,
flexible,
remote access



- Access anytime, anywhere
- Self-paced learning
- Wide range of digital resources
- Requires self-discipline
- Dependent on technology & internet

BLENDED LEARNING

Combines both
to leverage strengths



- Blend of face-to-face and online
- Flexible and personalized
- Leverages best of both worlds
- Supports diverse learning needs
- Improves engagement and outcomes



GOAL: Effective learning, accessibility, and better outcomes

WHAT IS BLENDED LEARNING?

Blended learning is an instructional approach that **integrates face-to-face** classroom methods with **online learning** experiences in a **structured** and **meaningful** way.



**FACE-TO-FACE
CLASSROOM METHODS**

+



**ONLINE LEARNING
EXPERIENCES**

=



BLENDED LEARNING



NOT JUST ADDING TECHNOLOGY

It goes beyond using digital tools. The focus is on how technology supports deeper learning.



REQUIRES PEDAGOGICAL PLANNING

Effective blending needs intentional design, clear goals, suitable strategies, and thoughtful integration.



FOCUS ON STUDENT ENGAGEMENT

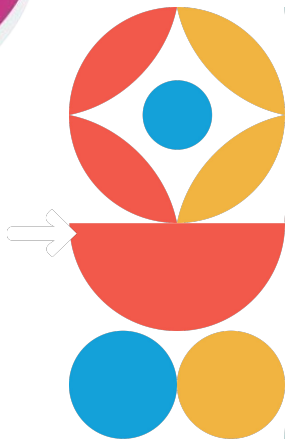
It aims to actively involve learners, promote interaction, and build a meaningful learning experience.



A Critical Insight on Technology Integration

**"Introducing technology
for the sake of
technology doesn't
work."**

Beams et al., 2017





Evolution of Blended Learning

The Blending Continuum



MORE
ONLINE



Mostly or Fully Online

Mostly or fully online curriculum in computer lab or classroom where students meet every day

01



Extended Blended Learning

Classroom instruction with significant, required online components that extend learning beyond the classroom and beyond the school day

02



Blended Learning (Traditional)

Classroom instruction integrating online resources, but limited or no requirements for students to be online

03



Traditional Face-to-Face

Traditional face-to-face setting with few or no online resources or communication

04

MORE
FACE-TO-FACE



Pedagogical Foundations

Learning theories underpinning effective blended learning approaches.

Constructivism



Learners actively construct knowledge through experience and reflection.

Connectivism



Knowledge built through networks, connections, and digital collaboration.

Experiential Learning



Learning by doing through hands-on activities and real-world application.

Student-Centered



Learners take ownership of their educational journey and goals.



DEFINING BLENDED LEARNING



Blended learning *is...*



A BLEND OF
CLASSROOM AND
WEB-BASED
TEACHING AND LEARNING



It is a “**thoughtful fusion**
of **face-to-face** and
online learning
experiences.



(Garrison & Vaughan, 2008).



Blended learning is
sometimes called
hybrid or
mixed-mode learning.



Blending the best of both worlds to create flexible, engaging, and effective learning experiences.



Features of Blended Learning

Core advantages that make blended learning effective and engaging.

Flexibility in Time &



01

Learn anytime, anywhere at your own speed with self-paced modules.

Personalized Pathways



02

Customize learning journeys based on individual needs and progress.

Digital Tools & Resources



03

Leverage interactive platforms, videos, and digital resources for enhanced learning.

Continuous Feedback



04

Real-time assessments and analytics provide ongoing performance insights.

Components of Blended Learning

Face-to-Face Instruction

Direct teacher-student interaction in physical classrooms for guidance and support.

Collaborative Learning

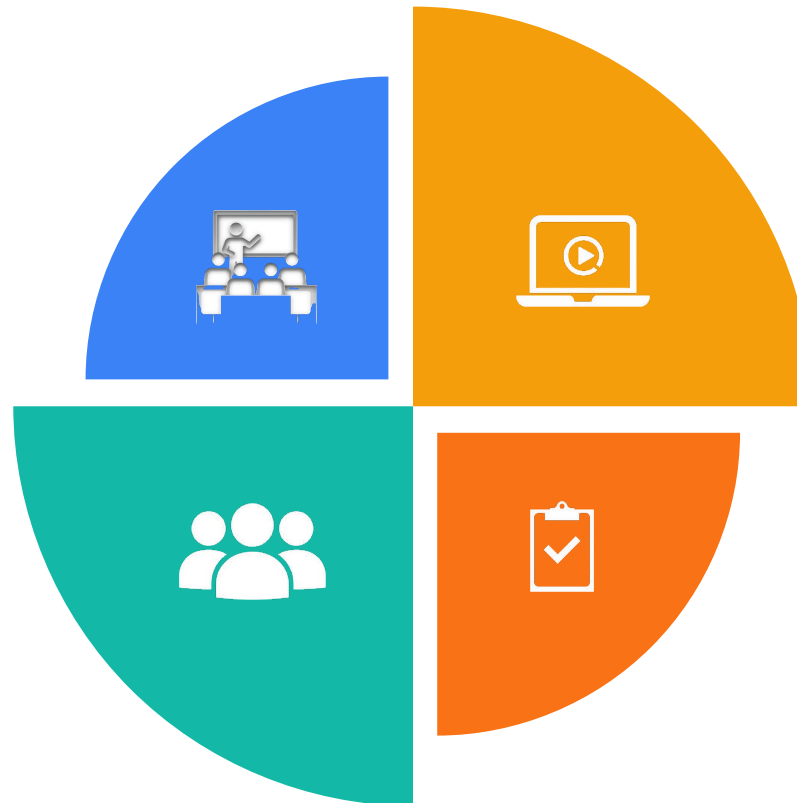
Group projects and peer discussions that build teamwork and communication skills.

Online Learning Activities

Digital content, videos, and interactive modules accessible anytime, anywhere.

Assessment & Feedback

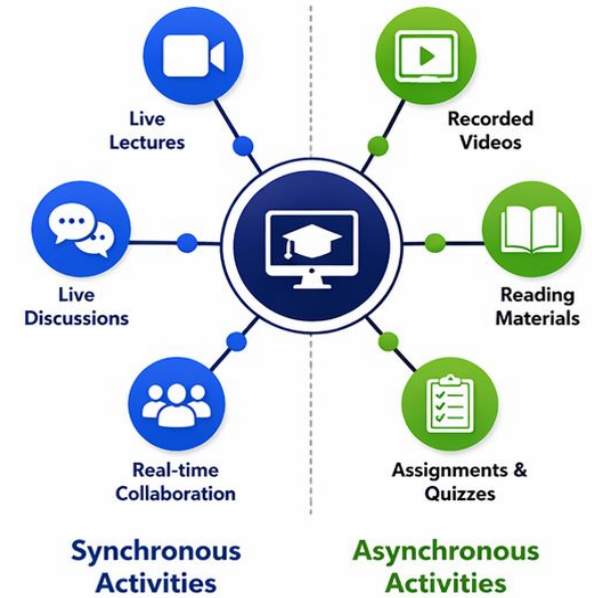
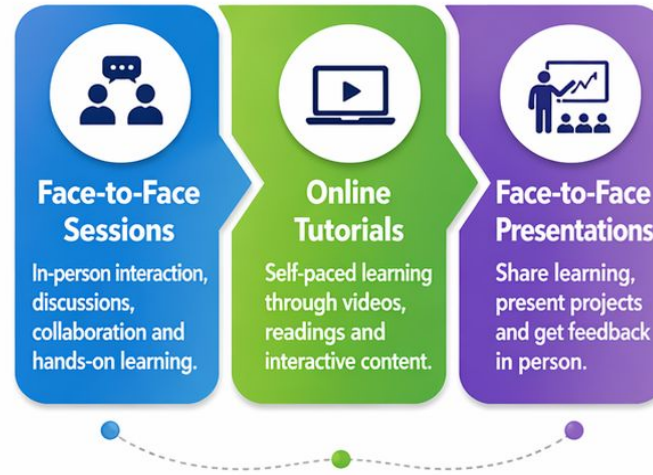
Continuous evaluation through quizzes, assignments, and timely instructor feedback.



Types of Blending

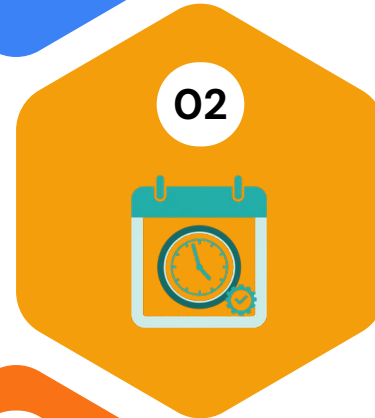


Blended Learning Flow



Blended learning Approaches

Hannon & Macken (2014) proposed a framework for blended learning approaches.



Blended Presentation

Flipped classroom approach with content online and class time for interaction.

Blended Block

Intensive face-to-face sessions combined with online learning components.

Fully Online

Short podcasts with synchronous tutorials for live engagement.

Blended Presentation & Interaction

The Flipped Classroom Approach



Online Content Delivery

Students access lectures, videos, and readings online before class at their own pace.



Classroom Interaction

Face-to-face time focuses on discussion, problem-solving, and hands-on activities.



Active Learning

Class sessions emphasize collaborative exercises, Q&A, and deeper exploration of concepts.

Assessment & Feedback

Continuous formative assessment with immediate instructor feedback and support.



Blended Block

Intensive face-to-face sessions combined with structured online learning periods.



Intensive Sessions

Concentrated face-to-face blocks for deep engagement and hands-on activities.

Flexible Online Work

Self-paced online learning between intensive sessions for content review.

Schedule Planning

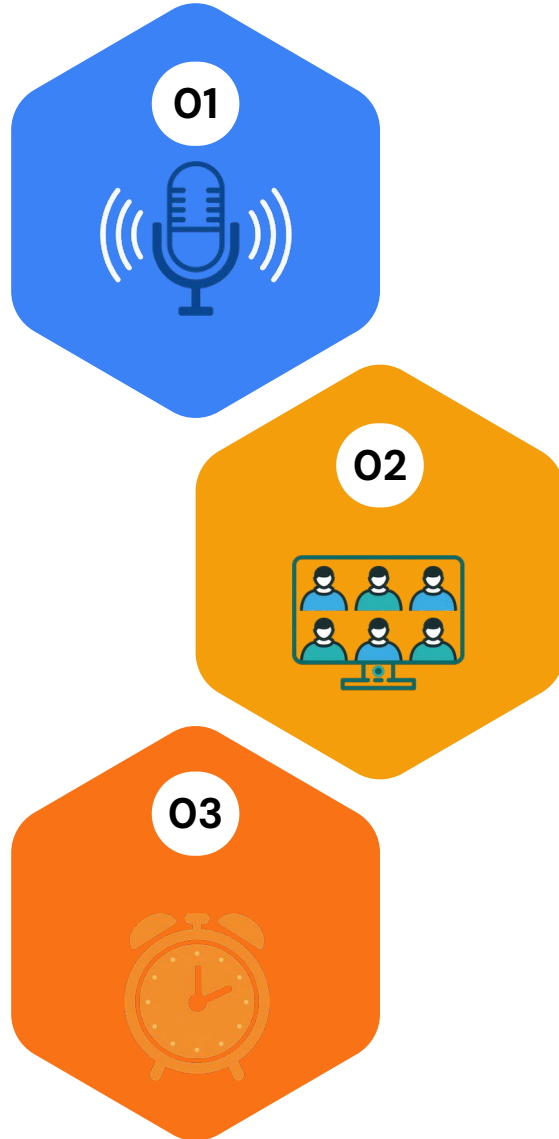
Strategic scheduling balances in-person blocks with online components.

Continuous Support

Ongoing mentoring and feedback throughout the blended learning cycle.

Fully Online

Short podcasts combined with synchronous tutorials for live engagement.



Podcast Content Delivery

Brief, focused audio or video podcasts deliver core content asynchronously.

Live Tutorial Sessions

Synchronous online tutorials provide real-time interaction and engagement.

Flexible Learning Pace

Students access materials anytime while scheduled sessions ensure community.



Three Blended Learning Models: Choosing the Right Fit



Flexible approaches that combine the best of face-to-face interaction and online learning.

1 MODEL 1

Blended Presentation and Interaction

Activity-focused face-to-face sessions blended with online resources.



For example, the flipped curriculum model combines:



Short lecture podcasts, online resources

Pre-class learning and foundational content.



Face-to-face tutorials/seminars

For interaction, discussion, and presentation of group work.

2 MODEL 2

Blended Block

Intensive face-to-face sessions combined with ongoing online learning and activities.



Combination of:



Intensive face-to-face sessions

As one day or half days.



Weekly online tutorials/seminars

For activities and interaction.



Online content and resources

Self-paced learning and additional materials.

3 MODEL 3

Fully Online

All learning activities and interactions take place online in a virtual environment.



Combination of:



Short lecture podcasts

With online resources and learning activities.



Online tutorials (synchronous)

Live or recorded for guided learning.



Interaction via online collaboration

Discussion forums, group work, and peer interaction.



Why these models?

They offer flexibility, promote engagement, and support diverse learning needs.



Engagement

Active learning through interaction and collaboration.



Flexibility

Learn anytime, anywhere, at your own pace.



Better Outcomes

Improved understanding and retention.





BLENDED LEARNING MODELS



Blended learning can be grouped into six distinct models that vary by teacher roles, physical space, delivery methods, and scheduling. However, as new versions of blended learning are developed, the relationships between these models will evolve. Presented below is a preliminary classification of the blended learning models currently in use.

1



Face-to-Face Driver

Face-to-face teachers deliver most of the curriculum. A physical teacher employs online learning in a technology lab or the back of the classroom to supplement.

2



Online Lab

An online platform delivers the entire course, but in a brick-and-mortar location. Often, students who participate in an online lab program also take traditional courses.

3



Rotation

Within a given course, students rotate on a fixed schedule between self-paced online learning and sitting in a classroom with a face-to-face teacher.

4



Self-Blend

Students choose to take remote online courses to supplement their school's traditional curriculum. This model of blended learning is extremely popular among high school students.

5



Flex

An online platform delivers most of the curriculum. Teachers provide on-site, as-needed support through in-person tutoring or small group sessions.

6



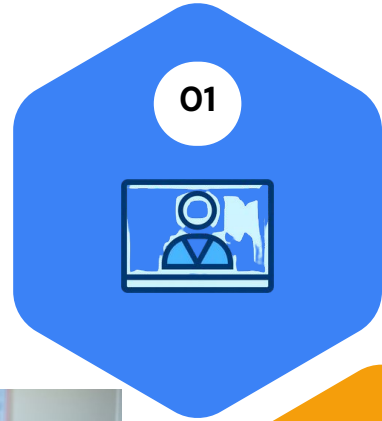
Online Driver

An online platform and teacher deliver all the curriculum. Students work remotely, and face-to-face check-ins are either available or mandatory.

Face-to-Face Driver Model



Traditional classroom instruction remains primary, enhanced with online resources for deeper learning.



Classroom-Centered

Teacher leads instruction in person with students physically present in the classroom.



Supplemental Online Content

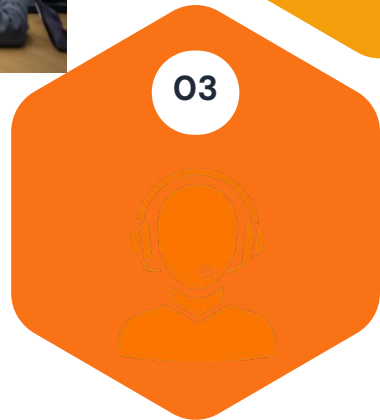
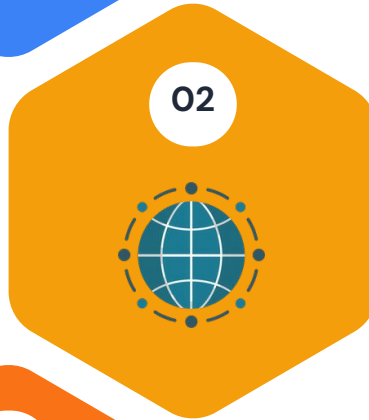
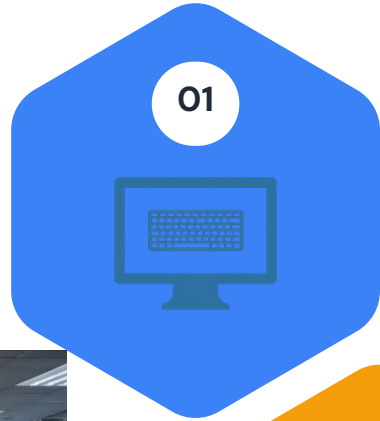
Digital resources complement face-to-face teaching through homework, practice, or enrichment.



Device Integration

Students use laptops or tablets in class for specific activities guided by the teacher.

Online Lab Model



Computer Lab Setting

Students complete coursework in dedicated computer labs with technology infrastructure.

Online Curriculum

Primary instruction delivered through digital platforms and online learning systems.

On-Site Support

Teachers and facilitators provide face-to-face assistance and guidance as needed.

Self-Blend Model

This model empowers learners to take ownership of their education by selecting additional online courses that match their unique needs and aspirations.



Student Choice

Learners select online courses to complement their in-person schedule.

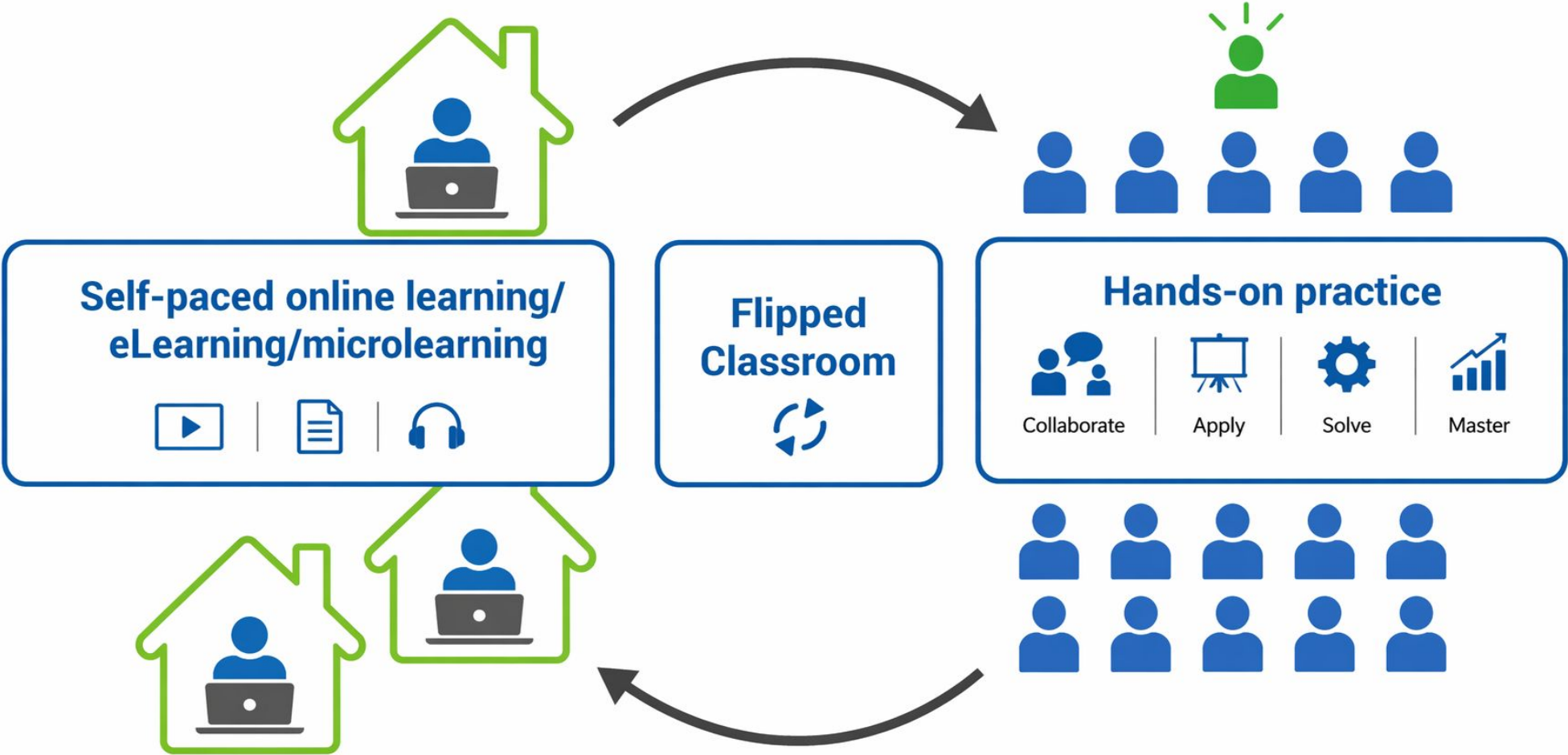
Personalized Learning

Students pursue interests or fill gaps not available at their school.

Flexible Integration

Online courses blend seamlessly with traditional classroom attendance.

Rotation Model



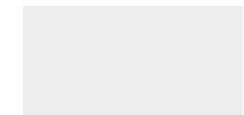
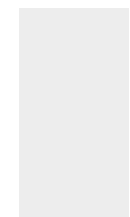
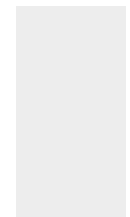


Rotation Model

Key Characteristics

Structured rotation between stations ensures balanced exposure to both digital and in-person learning.

Stations may include teacher-led instruction, collaborative activities, and independent online work.



How It Works

Students rotate on a fixed schedule between learning modalities, including online and face-to-face instruction.



BLENDED LEARNING

ROTATION MODEL



A blended learning approach where students rotate between different learning stations or modalities on a fixed schedule or as directed by the teacher.

HOW IT WORKS

1 TEACHER-LED INSTRUCTION



Whole-group or small-group instruction with the teacher.



2 ONLINE LEARNING



Students work online at their own pace with digital resources.



3 COLLABORATION STATION



Students collaborate on projects or activities with peers.



4 INDEPENDENT PRACTICE



Students practice and apply learning independently.



STUDENTS ROTATE



TEACHER'S ACTIVE ROLE

- ✓ Plans meaningful rotations and learning activities
- ✓ Provides direct instruction and targeted support
- ✓ Monitors progress and gives feedback
- ✓ Ensures engagement and accountability
- ✓ Adjusts instruction based on student needs



COMBINES
FACE-TO-FACE
AND ONLINE
LEARNING



ROTATION CAN BE
TIME-BASED OR
ACTIVITY-BASED



TEACHER PLAYS AN
ACTIVE INSTRUCTIONAL
ROLE



SUITABLE FOR
STRUCTURED
CLASSROOM
ENVIRONMENTS



BENEFITS

- Personalized learning
- Increased engagement
- Immediate feedback and support
- Builds independence and collaboration skills
- Prepares students for a digital world



Key Features of Rotation Model

Structured schedule:

Fixed rotation time or sequence.

Multiple learning stations:

Online, teacher-led, collaborative

Teacher-guided learning:

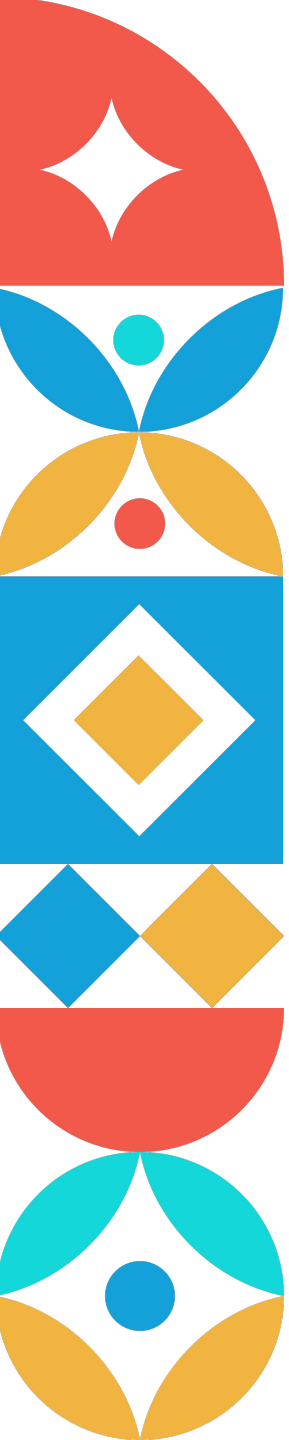
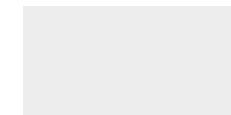
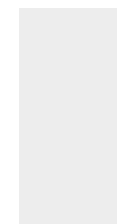
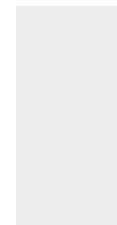
Strong teacher presence

Blended instruction:

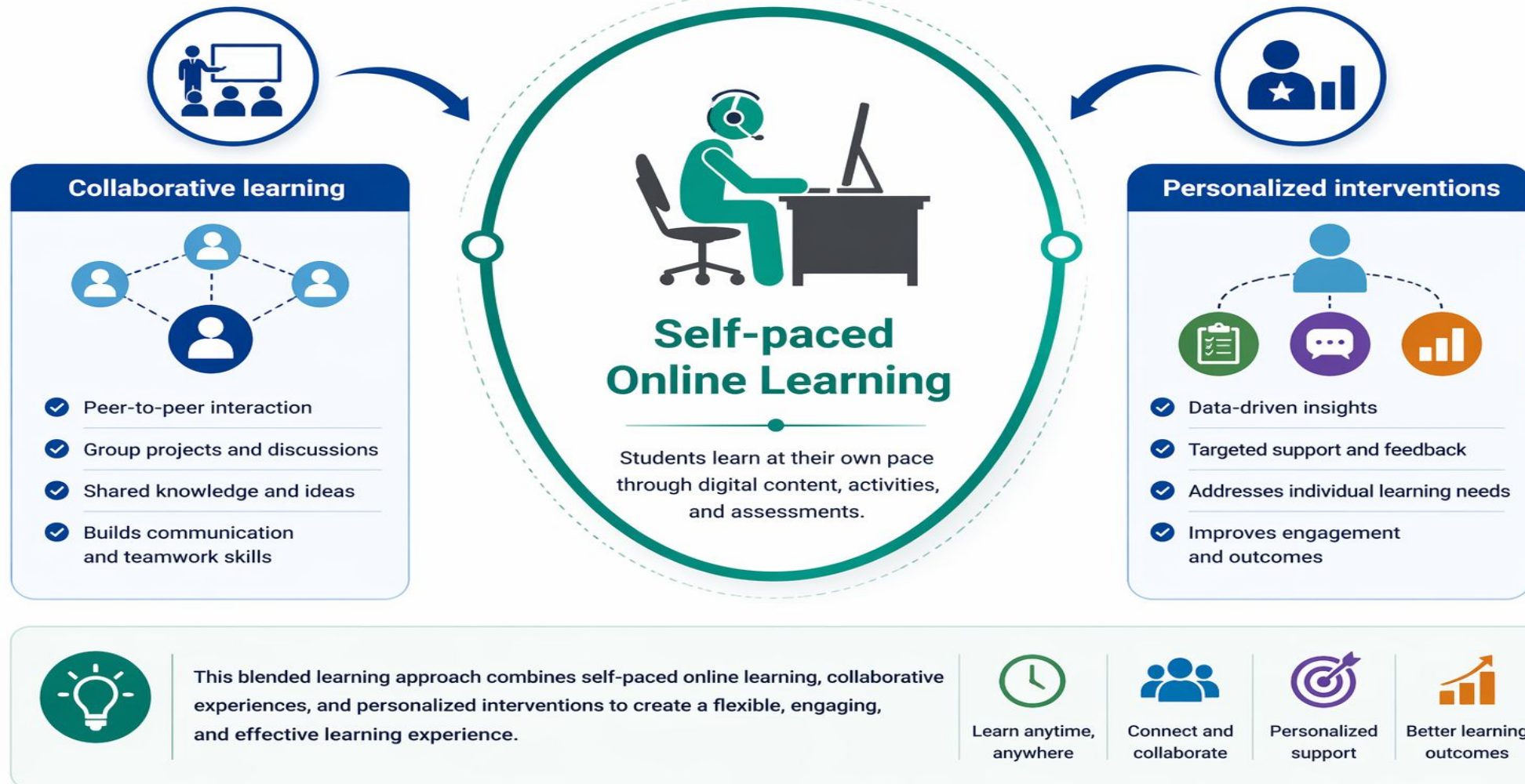
Mix of digital and in-person learning

Active engagement:

Students participate in varied activities



Flex Model



FLEX MODEL

A TYPE OF BLENDED LEARNING

A type of blended learning where online learning is the primary mode of instruction, and face-to-face support is provided as needed.



Students learn mainly through digital platforms

Online resources, videos, assignments, and assessments drive learning.



Teacher acts as a facilitator rather than a lecturer

Guides, supports, and coaches students as they learn.



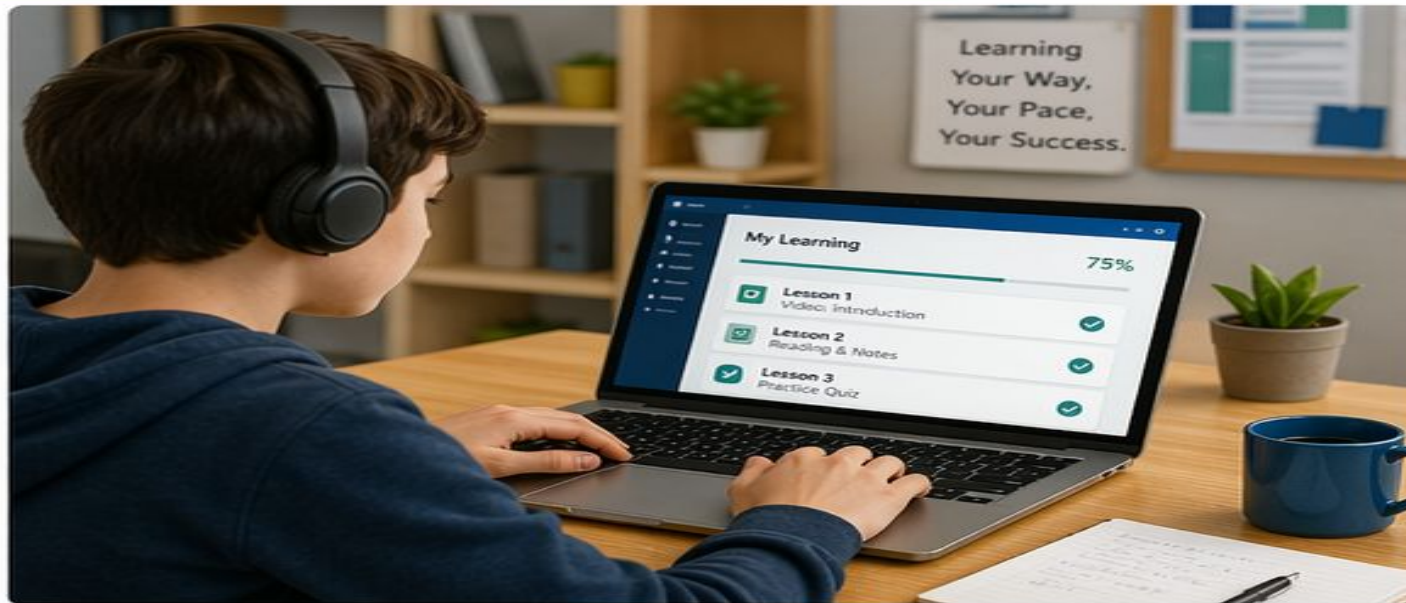
Learning is highly personalized and flexible

Students access what they need, when they need it.



Students progress at their own pace

Move forward when ready, with no rigid pacing for all.



HOW IT WORKS



LEARN ONLINE

Students access digital content and complete activities.



TRACK PROGRESS

Teachers monitor performance and identify needs.



GET SUPPORT

Students receive help on-demand, in person or online.



KEEP MOVING FORWARD

Students continue learning at their own pace.



**THE FLEX MODEL
EMPOWERS STUDENTS**

It builds independence, encourages responsibility, and supports success for every learner.



Flex Model



Flexible Support

Teachers provide face-to-face guidance on an as-needed basis, allowing students to progress at their own pace.

KEY FEATURES



ONLINE-FIRST APPROACH

Most content is delivered digitally.



SELF-PACED LEARNING

Students control time, place, and pace.



ON-DEMAND TEACHER SUPPORT

Help provided when required.



DATA-DRIVEN INSTRUCTION

Teachers monitor progress through analytics.

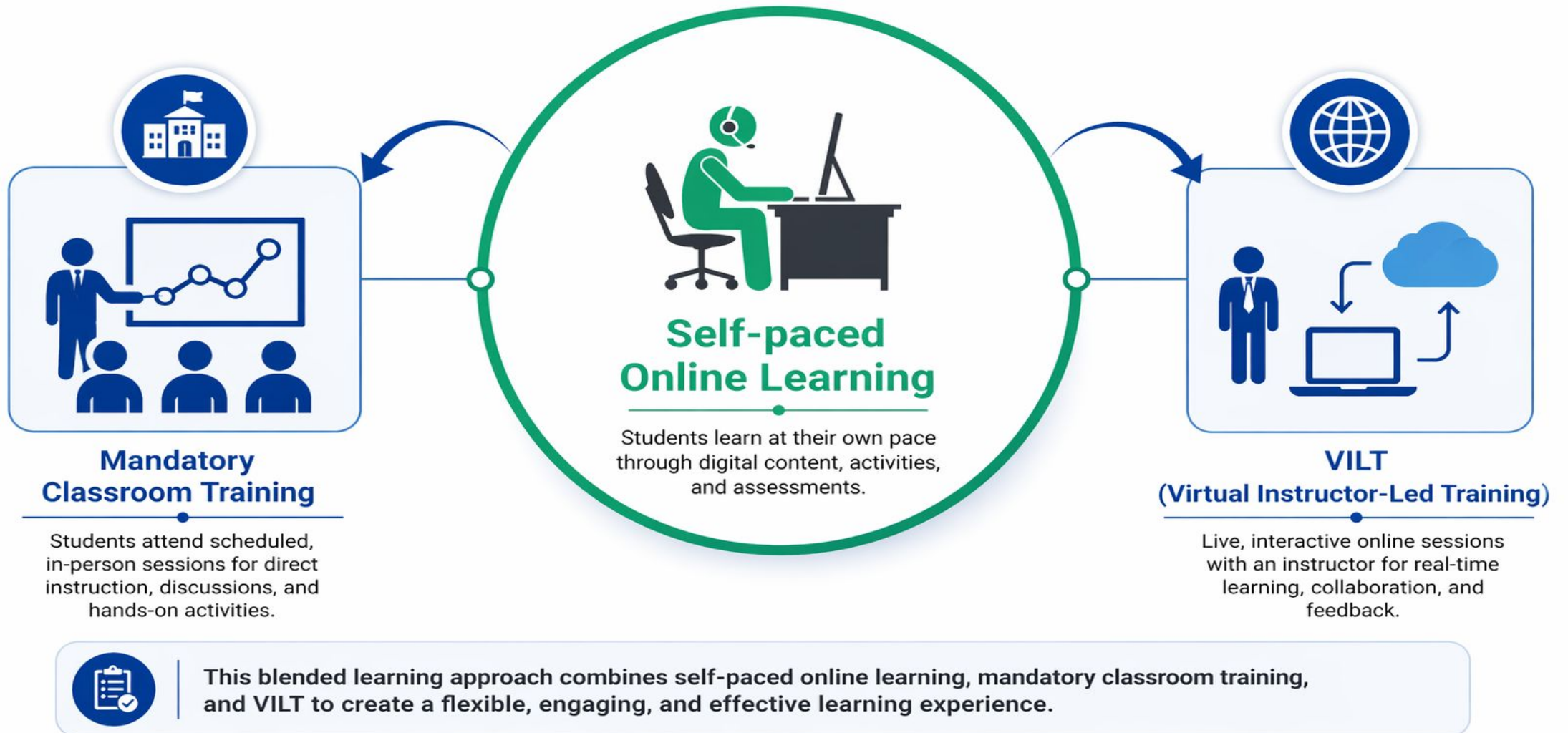


FLEXIBLE SCHEDULING

No rigid timetable—learn when and where it works best.



Enriched Virtual Model



ENRICHED VIRTUAL MODEL

A BLENDED LEARNING APPROACH

A blended learning approach where students complete most of their learning online, but also attend required face-to-face sessions periodically.



COMBINES REMOTE LEARNING WITH OCCASIONAL IN-PERSON INTERACTION

Students learn primarily online and attend in-person sessions at scheduled intervals.



NOT A FULLY ONLINE MODEL

In-person meetings are an essential part of the course for engagement, collaboration, and support.



DESIGNED FOR FLEXIBILITY WITH STRUCTURED TOUCH POINTS

Built-in face-to-face sessions provide meaningful connections and academic support.



STUDENTS ARE NOT REQUIRED TO ATTEND DAILY CLASSES

Students have the flexibility to learn on their own time, with scheduled in-person sessions.



EXAMPLE SCHEDULE

- ✓ Online learning throughout the week
- ✓ Face-to-face session every 2–4 weeks
- ✓ Group activities, projects, or assessments
- ✓ One-on-one support as needed



The Enriched Virtual Model gives students the independence to learn online, with the connection and support of in-person sessions that matter.

HOW IT WORKS



1. LEARN ONLINE

Students access lessons, resources, and activities through the LMS.



2. COMPLETE WORK

Students work on assignments, discussions, and assessments online at their own pace.



3. ATTEND IN-PERSON SESSIONS

Students meet on campus or in person for collaborative learning and support.



4. APPLY & PROGRESS

Students apply what they learn, receive feedback, and continue progressing online.



Enriched Virtual Model



A blended learning approach where students **complete most of their learning online**, but also attend **required face-to-face sessions periodically**



KEY FEATURES



MOST LEARNING HAPPENS ONLINE

Content, lectures, discussions, and assignments are delivered through digital platforms.



REQUIRED FACE-TO-FACE SESSIONS

Students attend in-person sessions on a set schedule for collaboration, activities, and instruction.



FLEXIBLE LEARNING SCHEDULE

Students manage their time and complete work at their own pace.



STRUCTURED TOUCH POINTS

Regular in-person meetings keep students engaged and on track.

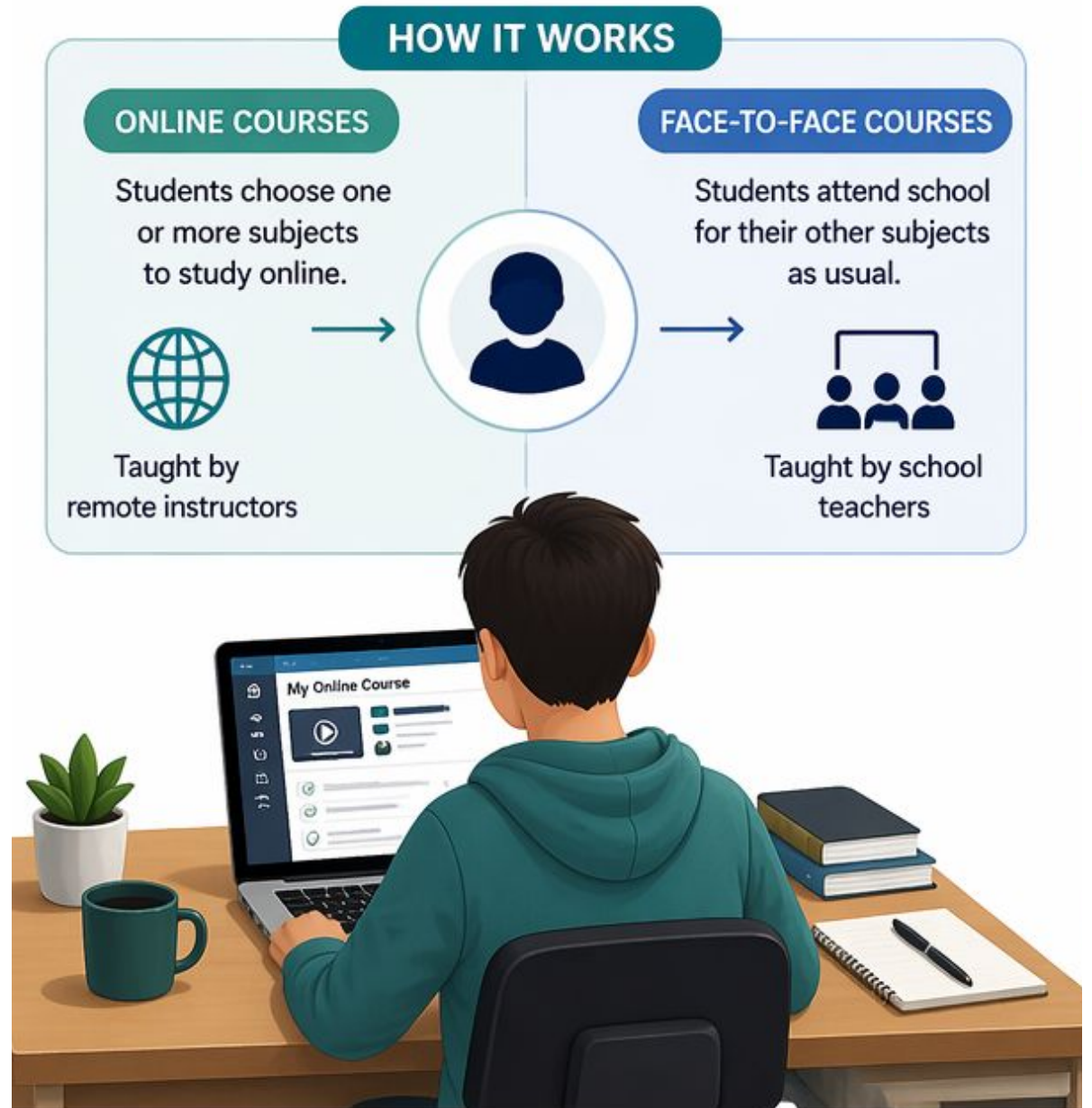


ONGOING SUPPORT

Teachers provide guidance and feedback online and during in-person sessions.



À La Carte Model



À LA CARTE MODEL

FLEXIBILITY. CHOICE. PERSONALIZED LEARNING.



1

FULLY ONLINE COURSES



Selected subjects are delivered entirely online through digital platforms.

EXAMPLE



A student takes an online psychology course from a virtual provider.

2

CHOICE AND FLEXIBILITY



Students decide which online courses to take based on their interests, goals, and schedule.

EXAMPLE



A student chooses online Spanish and Graphic Design courses.

3

EXTERNAL OR REMOTE INSTRUCTORS



Teaching may not be by the school teacher. Courses are taught by external or remote instructors.

EXAMPLE



A certified online instructor from a partner school teaches the course.

4

PARALLEL LEARNING MODES



Students learn online for selected courses while attending face-to-face classes for others.

EXAMPLE



A student attends school daily for math but learns history online.

5

CREDIT-BASED SYSTEM



Online courses are often aligned with the formal curriculum and carry credit toward graduation.

EXAMPLE



Credits earned online count toward the student's diploma requirements.



THE À LA CARTE MODEL EMPOWERS STUDENTS TO TAKE CHARGE OF THEIR LEARNING PATH.



Personalized learning experience



Flexibility to fit your schedule



More course options and opportunities

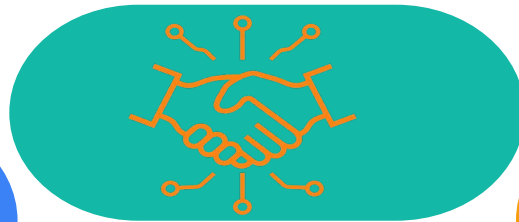
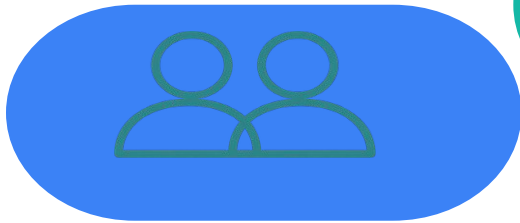


Builds skills, confidence, and success

Benefits of Blended Learning

Distance Collaboration

Enables meaningful collaboration with peers and instructors regardless of physical location.



Increased Flexibility

Students can learn at their own pace and schedule, balancing online and face-to-face courses.



Enhanced Interaction

Improved communication channels between students and instructors through multiple platforms.

Virtual Citizenship Skills

Develops digital literacy and responsible online behavior essential for modern learning.

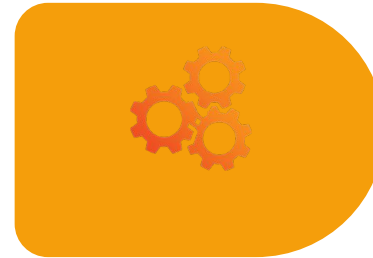


Challenges of Blended Learning

Key obstacles to address when implementing blended learning

Technology Access

Connectivity issues and unequal device access create barriers for students.



Course Design Complexity

Creating effective online courses requires specialized skills and resources.



Safety & Data Security

Protecting student data and ensuring safe online environments is critical.

Student Motivation

Maintaining engagement and self-discipline in online learning is challenging.

Integration Strategies



Collaborative Learning

Use more collaborative and cooperative learning strategies to enhance engagement.

Adaptive Approaches

Adapt and integrate approaches based on individual learner needs and preferences.

Digital Resource Access

Ensure availability of digital resources for both teacher and learner ends.

Tools for Integration

Digital Planning Software



01

Cmap, mindmap tools for organizing concepts and visualizing learning pathways.

Learning Management Systems



03

MOODLE, BlackBoard, and SWAYAM for course management and delivery.

Web Conferencing Tools



02

Web-conferencing tools like Adobe Connect, BigBlueButton, and VMukti.

Real-Time Collaboration



04

Enables real-time collaboration, virtual classrooms, and remote instruction.

Thank You

