

AI CHATBOTS: STUDENT SUPPORT 24/7

Empowering learners anytime, anywhere

Hari Krishna Arya

Director (Academics)

Gyanodaya International School

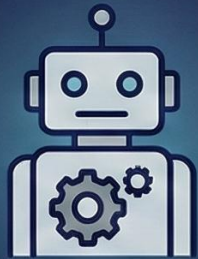
Hanumangarh Town

(National ICT Awardee)

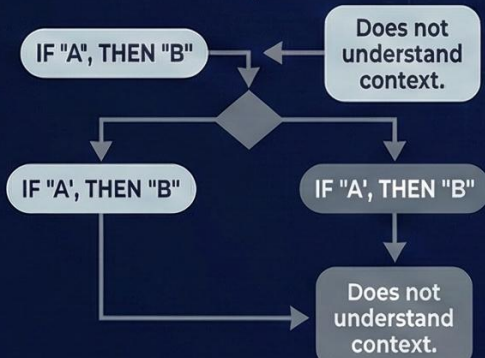


WHAT IS AI CHATBOT?

TRADITIONAL CHATBOTS



Follows pre-set rules.
Rigid, scripted responses.



AI CHATBOTS



A computer program that simulates human conversation through text or voice commands.

ARTIFICIAL INTELLIGENCE (AI)

MACHINE LEARNING (ML)

NATURAL LANGUAGE PROCESSING (NLP)

UNDERSTANDS CONTEXT, INTENT, & MEANING



Sure, I can help with that based on your previous request... ✓



Here's a personalized recommendation... ✓



Sure, I can help with that based on your previous request. ✓



Here's a personalized recommendation... ✓



Sure, I can help ihort and what... ✓

Providing **MORE HUMAN-LIKE,** and **FLEXIBLE RESPONSES.**

BENEFITS OF AI CHATBOTS FOR STUDENTS



24/7 PERSONALIZED SUPPORT



- Round-the-clock help for self-paced learning.



- Immediate access to information.



- Reduces waiting time for assistance.



INSTANT FEEDBACK & TUTORING



- Immediate customized guidance on assignments.



- Acts as virtual tutor for concepts & languages.



- Step-by-step problem solving.



IMPROVED ENGAGEMENT & MOTIVATION



- Interactive, conversational environment.



- Non-judgmental space for questions.



- Gamified learning & positive reinforcement.



ENHANCED STUDY SKILLS & ORGANIZATION



- Reminders for deadlines & tasks.



- Summaries of study materials.



- Goal-setting and tracking.



ACCESSIBILITY & INCLUSIVITY



- Equal support across time zones.



- Multimodal access (text, speech, visual).



- Multilingual support for diverse learners.



SKILL DEVELOPMENT



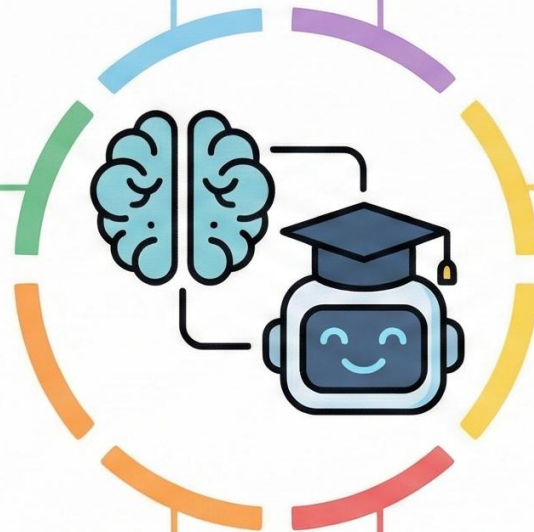
- Writing & grammar check assistance.











- Critical thinking prompts.



- Language practice and fluency.



EXAMPLES OF STUDENT FOCUSED AI CHATBOTS

| CHATBOT | USE CASE | PROS | CONS |
|---|------------------------------------|--|---------------------------|
|  Duolingo Bot | Language learning | Fun, gamified, instant feedback | Limited scope |
|  Socratic (Google) | Homework help | Step-by-step solutions | Best for math/science |
|  Brainly AI | Peer + AI Q&A | Community + AI support | Risk of inaccuracies |
|  ChatGPT | General study aid | Versatile, essay writing, coding help | May produce errors |
|  Quizlet AI Tutor | Exam prep | Personalized quizzes | Premium features locked |
|  Microsoft Copilot | Writing, summarizing, productivity | Integrated with Office tools | Requires subscription |
|  Gemini (Google) | Research + reasoning | Strong integration with Google ecosystem | Still evolving |
|  Perplexity AI | Research assistant | Cited answers, reliable sources | Limited personalization ✨ |

CHALLENGES & CONCERNS OF AI CHATBOTS FOR STUDENTS

ACADEMIC INTEGRITY & CHEATING

Plagiarism & cheating during assessments. Dishonesty in exams, undermining fair evaluation.



Erosion of Trust

REDUCED CRITICAL THINKING

Dependency diminishes independent, creative, and critical thinking skills. Used as a quick shortcut, not a learning supplement.



Mental Shortcutting

INFORMATION ACCURACY

Risk of hallucinations or inaccurate information. Can misguide students with incorrect facts.



Misinformation Trap

OVER-RELIANCE & COGNITIVE DECLINE

Too much dependency harms long-term learning and academic independence. Erodes fundamental knowledge.



Skill Degradation

DATA PRIVACY & SECURITY

Concerns over privacy and security of student's personal and academic data. Potential for data breaches.



Vulnerable Records

LACK OF EMOTIONAL INTELLIGENCE

No empathy or nuanced support. Leads to dehumanized and impersonal learning experiences.



Missing Human Touch

EQUITY & ACCESS

Uneven playing field with paid, premium tools. Disparity in access to advanced resources.



Digital Divide

ETHICAL & PSYCHOLOGICAL IMPACT

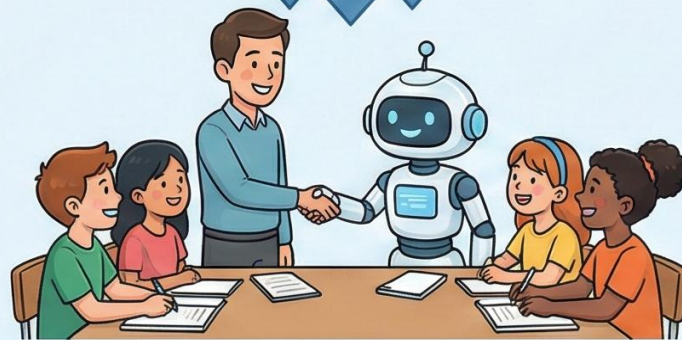
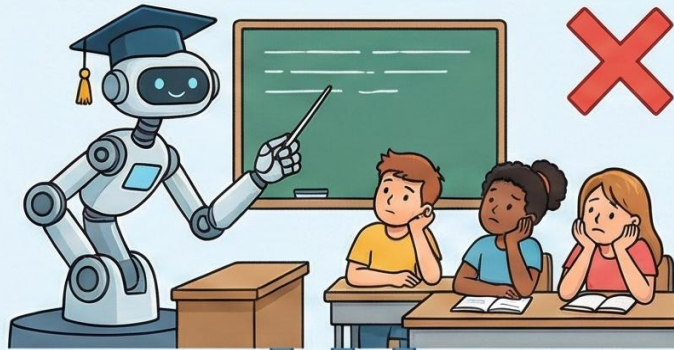
Induces anxiety, feelings of inadequacy, and job fears. Complex ethical considerations for future readiness.



Mental Wellbeing Strain

COMMON DOUBTS & RESOLUTION ON AI CHATBOTS FOR STUDENTS

? CAN CHATBOTS REPLACE TEACHERS?



No, they complement teachers.

AI offers personalized support, frees up teacher time for mentorship, but lacks human empathy and complex guidance.

🔍 ARE ANSWERS ALWAYS CORRECT?



Students must cross-check.

AI can hallucinate or provide biased information; critical thinking and verifying with credible sources are essential.

🔒 IS MY DATA SAFE?



Use trusted platforms, follow privacy rules.

Choose reputable providers, review privacy policies, avoid sharing sensitive personal details, and use anonymization where possible.

ROLE OF EDUCATORS & PARENTS: AI CHATBOTS IN EDUCATION

GUIDE RESPONSIBLE USE



Academic Integrity



Teach honest work & proper citation.

Data Privacy



Protect personal info & understand privacy policies.

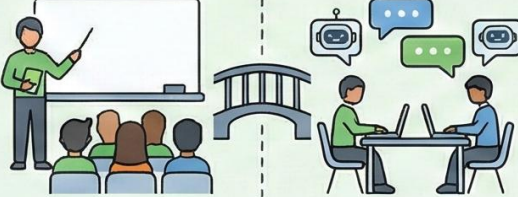
Critical Thinking



Encourage questioning & evaluating outputs.

Empower students to be ethical & informed digital citizens.

INTEGRATE INTO BLENDED LEARNING



Supplementary Tool

Use for brainstorming, practice, & personalized support.



Teacher-Led

Design activities where AI complements instruction.



Active Engagement

Foster interactive & creative learning experiences.

Blend human teaching with AI capabilities for enriched learning.

MONITOR ACCURACY & ETHICS



Fact-Checking

Verify AI information with reliable sources.



Bias Awareness

Identify & discuss potential biases in AI responses.



Ethical Discussions

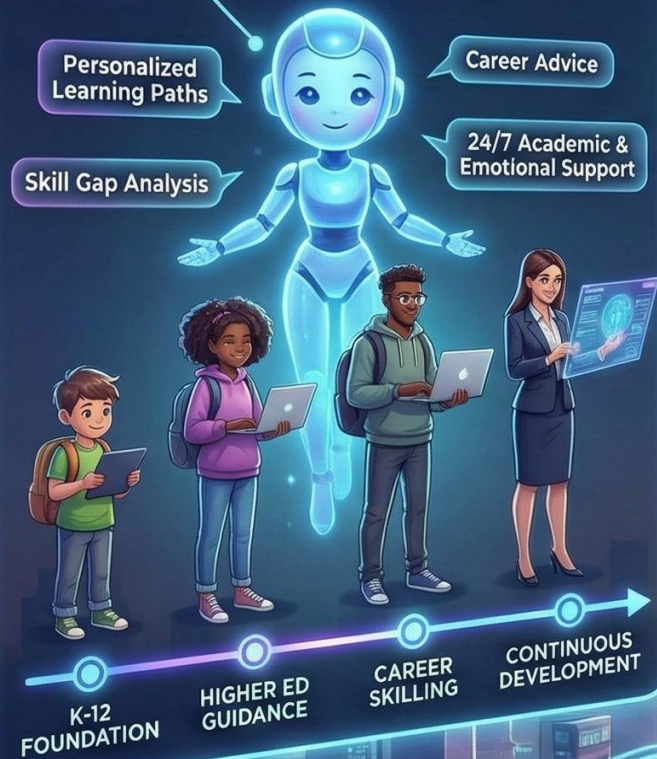
Have open conversations about societal impact.

Vigilantly oversee AI use to ensure truthfulness & fairness.

Collaboration between home and school is essential for navigating the AI educational landscape effectively.

AI CHATBOTS FOR STUDENTS: FUTURE OUTLOOK

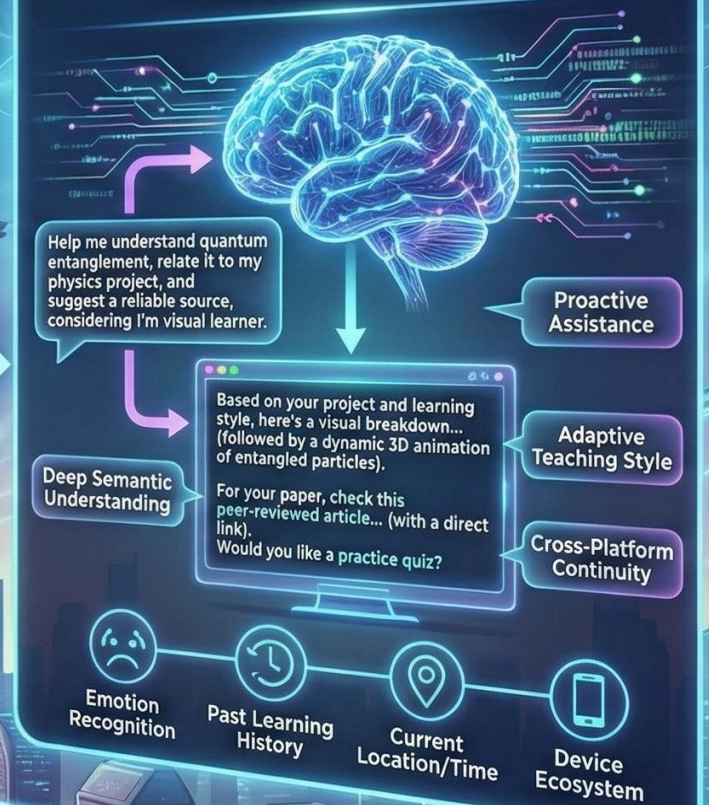
AI MENTORS FOR LIFELONG LEARNING



INTEGRATION WITH AR/VR CLASSROOMS



SMARTER, CONTEXT-AWARE CHATBOTS



EMPOWERING THE NEXT GENERATION WITH INTELLIGENT, IMMERSIVE, AND ADAPTIVE EDUCATIONAL COMPANIONS.

THANK YOU