



शिक्षा मंत्रालय
MINISTRY OF
EDUCATION



robotex
India

Demystifying Artificial Intelligence

Concepts, Myths, and Realities for School Education



Artificial Intelligence in Education

Machine Learning

Computers learn from data and improve over time without being told every step.

Computer Vision

Computers can “see” and understand pictures and videos.

Natural Language Processing

Computers can understand, read, and respond in human language.

Sensor Technology

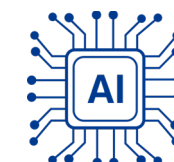
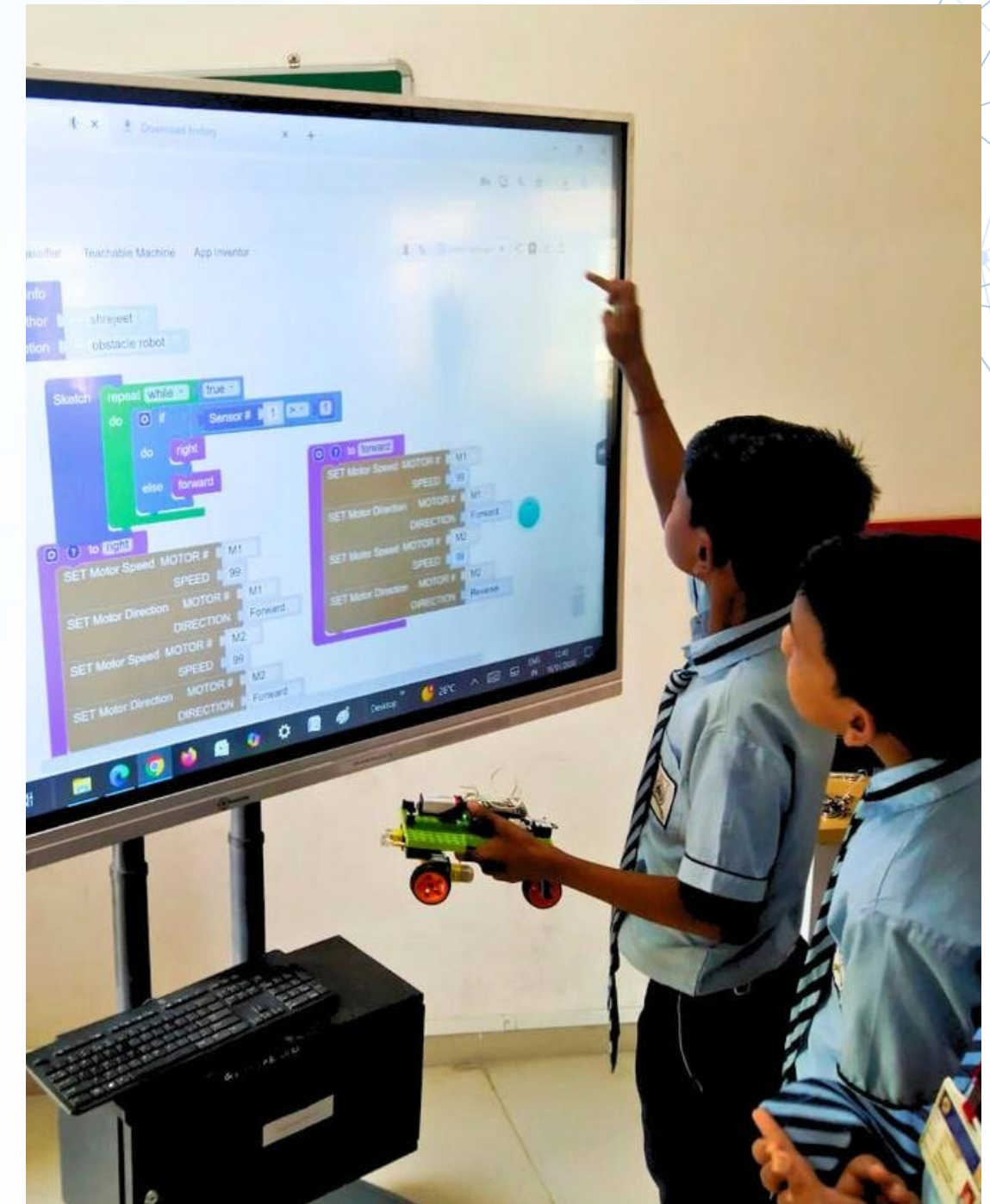
Devices that collect information from the surroundings (like light, temperature, movement).

Robotics Integration

Combining computers and machines so robots can act and perform tasks on their own.

Neural Networks

A computer system designed to work like the human brain to recognize patterns and make decisions.



Components of AI Systems

Understanding the foundational elements that make AI possible



Machine Learning

AI learns patterns from data through experience, improving performance without explicit programming.



Computer Vision

Systems recognize and interpret visual information, enabling facial recognition and image analysis.



Natural Language Processing

AI understands, interprets, and generates human language for chatbots and translation services.



Sensor Technology

Devices collect real-time data about environment, movement, and interactions.



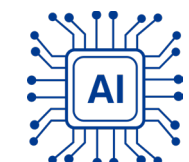
Robotics Integration

Physical systems combine AI with mechanical components for autonomous action.



Neural Networks

Mimics human brain structure to process complex patterns and make predictions.



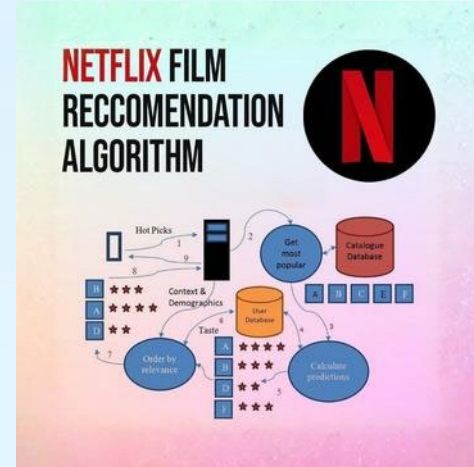
AI in Everyday Life

Recognizing AI applications in familiar contexts helps us understand its capabilities and limitations



Navigation Systems

GPS apps like *Google Maps* use AI to analyze traffic patterns and suggest fastest routes.



Content Recommendations

Netflix and YouTube analyze viewing habits to suggest personalized entertainment options. Social media platforms curate news feeds based on user interests and interactions.



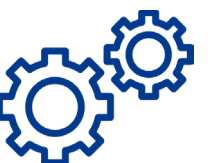
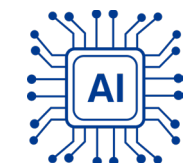
Voice Assistants

Alexa, Siri, and Google Assistant understand natural language commands and perform tasks through voice interaction.



Security Systems

Facial recognition unlocks phones, tags friends in photos, and enables secure authentication.



School Applications of AI

AI transforms educational experiences by personalizing learning pathways and empowering teachers with actionable insights

Intelligent Tutoring Systems

Adaptive learning platforms adjust content difficulty based on student performance, providing targeted support for individual learning needs.

Automated Assessment

AI grades assignments and provides instant feedback, freeing teachers to focus on facilitating deeper learning experiences.

Learning Analytics

Data-driven insights identify students needing intervention while highlighting effective teaching strategies.

Personalized Learning Paths

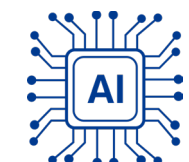
Digital platforms recommend resources matching each student's learning style, pace, and interests.

Language Learning Tools

AI-powered apps teach pronunciation, grammar, and vocabulary through interactive practice.

Accessibility Solutions

Voice-to-text and text-to-speech tools help students with learning differences access content successfully.



Understanding AI Capabilities



Expert Human-Like Performance

AI masters specific tasks like playing chess or classifying images after processing thousands of examples.



Pattern Recognition at Scale

AI identifies relationships in massive datasets—like predicting weather from satellite images—that overwhelm human capacity. Recent demonstrations include AI defeating world champions at complex strategy games and diagnosing medical conditions from scans.



Continuous Learning from Experience

Machine learning systems improve accuracy through practice, remembering helpful patterns while discarding less useful ones.



Informed Decision Support

AI processes facts and recommends options, but final judgment requires human wisdom to weigh context, values, and consequences.



Dispelling Common Myths

Separating fact from fiction enables informed discussions about AI's role in education and society



Myth: AI Is Conscious

AI follows programmed instructions—it doesn't think, feel, or possess awareness.



Myth: AI Replaces Humans

AI is a tool that expands human capability; teachers remain essential guides for holistic learning.



Myth: AI Is Perfect

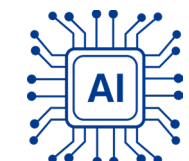
AI makes mistakes, reflects training data biases, and needs human oversight to ensure quality outcomes.

Myth: AI Creates Itself

Every AI system depends on humans to design goals, select training data, evaluate results, and make ethical decisions.

Myth: AI Learns Like People

Humans learn from few examples and apply knowledge creatively; AI needs thousands of examples for each narrow skill.



AI Myths & Realities: Education Perspective

Addressing common misconceptions among educators to foster informed AI integration in schools.

Myth: AI Will Replace Teachers

Reality: AI tools **enhance** educators, enabling more personalized learning and freeing teachers for deeper mentorship. It elevates the human role, rather than replacing it.

Myth: AI Makes Teaching Effortless

Reality: Effective AI integration requires thoughtful planning, professional development, and ongoing adaptation. While automating some tasks, it demands **new skills** and strategic effort from teachers.

Myth: All Students Benefit Equally from AI

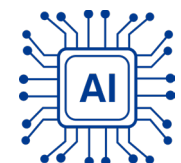
Reality: Without careful implementation, AI can exacerbate existing inequalities. Ensuring **equitable access**, diverse data, and culturally relevant content is crucial for fair benefits.

Myth: AI Can Solve All Learning Problems

Reality: AI excels at specific challenges like adaptive practice, but it cannot address complex social-emotional needs or foster critical thinking in isolation. A **balanced human-AI approach** is essential.

Myth: Teachers Need to Be Tech Experts to Use AI

Reality: Teachers need to understand AI's pedagogical applications and ethical implications, not necessarily its underlying code. The focus is on **effective & responsible integration** in the classroom.



The Path Forward: AI Integration



Build AI Literacy

Introduce AI concepts through age-appropriate activities and project-based learning aligned with NCF 2023 frameworks. Students explore how AI works through hands-on experience with robotics clubs and coding challenges rather than abstract theory.



Focus on Competencies

Develop critical thinking, problem-solving, and ethical reasoning through AI challenges. Students learn to evaluate AI recommendations, identify bias, and make informed decisions rather than passively accepting automated suggestions.



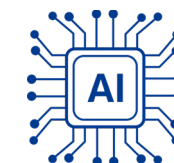
Foster Collaborative Learning

Develop group projects where students design AI solutions for school or community needs, emphasizing teamwork, communication, and diverse perspectives. Competitions like robot olympiads motivate innovation while teaching resilience from failure.

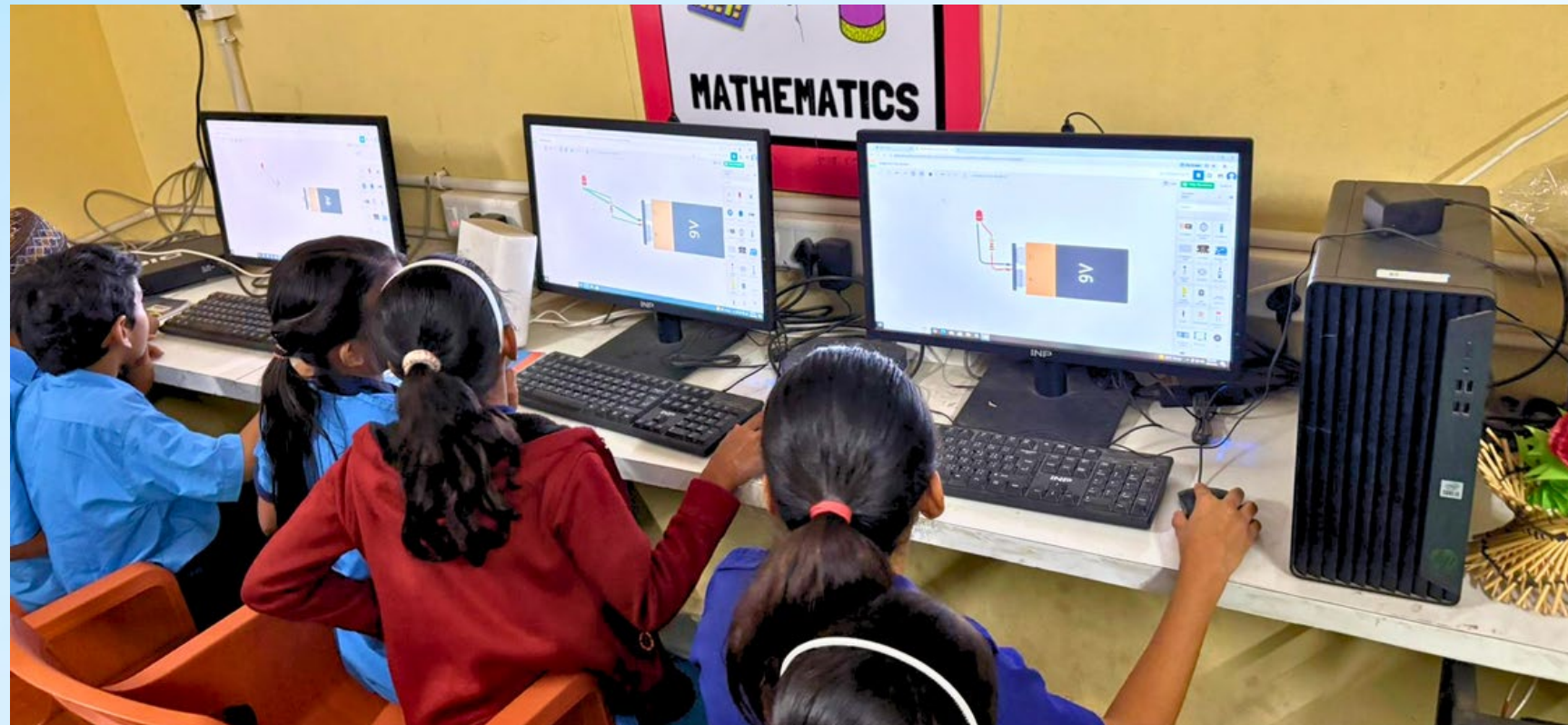


Ensure Inclusive Access

Provide equitable opportunities for all students to explore AI regardless of socioeconomic background, gender, or ability. Schools need community partnerships with universities and tech companies to share equipment, expertise, and role models.



Ethical Considerations in AI



Key Ethical Principles

As AI becomes embedded in education and daily life, learners must understand its ethical dimensions and take responsibility for its consequences.



Understanding Bias

AI reflects training data—garbage in produces garbage out. Students learn to question AI assumptions and seek diverse perspectives.



Questioning Authority

AI doesn't replace judgment—learners evaluate recommendations, consider alternatives, and take final action responsibly.



Protecting Privacy

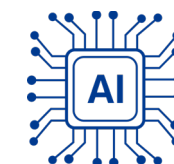
AI systems collect personal information—students must understand digital footprints and consent to data collection.



Ensuring Accountability

Humans design and maintain AI—students learning computational thinking also assume responsibility for AI's consequences.

When ChatGPT or similar AI summarizes texts for students, learners must verify reasoning and check for omitted context.



Empowering Student Agency

Students become creators, not just consumers, of intelligent systems—developing both technical skills and ethical awareness

Design Thinking

Students identify local problems and prototype AI solutions using blocks-based coding, considering who benefits and who might be excluded.



Hands-On Robotics

Build robots that respond to environment using sensors and simple AI, learning how code translates to physical action.

Ethics Discussions

Debate dilemmas like surveillance, job automation, and autonomous weapons, developing frameworks to evaluate AI's social impact.



Creative Projects

Use AI as collaborator for poetry generation, music composition, and art creation while maintaining authentic expression and voice.

Call to Action for Educators

Embrace AI integration while maintaining learner-centered pedagogy. The journey begins with curiosity, continues through experimentation, and advances through reflective practice.

Resources for Continued Learning

Explore NCERT guidelines, engage in professional development programs, connect with educator communities, and access open educational resources aligned with NEP 2020 and NCF 2023.

