

# Gemini for Content Creation



Unlocking Leadership Potential with AI  
Day 3 - September 17, 2025

AI is all around us



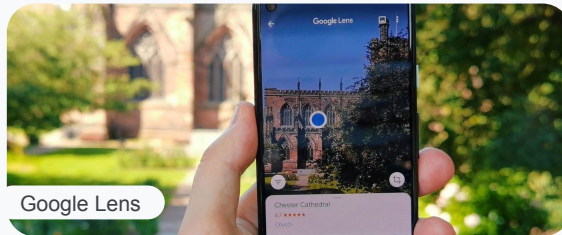
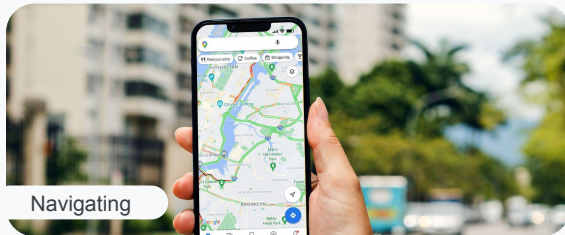
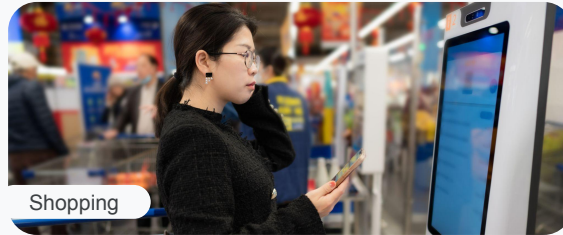
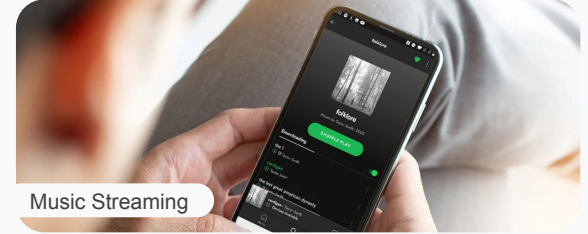
Our guiding question:

How does AI  
influence my digital life?



What AI did you identify?

What data is used by the AI?



01

02

03

04

05

06

07

# What is AI ?



## Artificial Intelligence



AI is **simultaneously revolutionary** and something that's been quietly helping us out for years.

**Kent Walker**

President of Global Affairs, Google & Alphabet



Artificial intelligence (AI) is the **science of teaching machines to mimic intelligent human behaviours.**

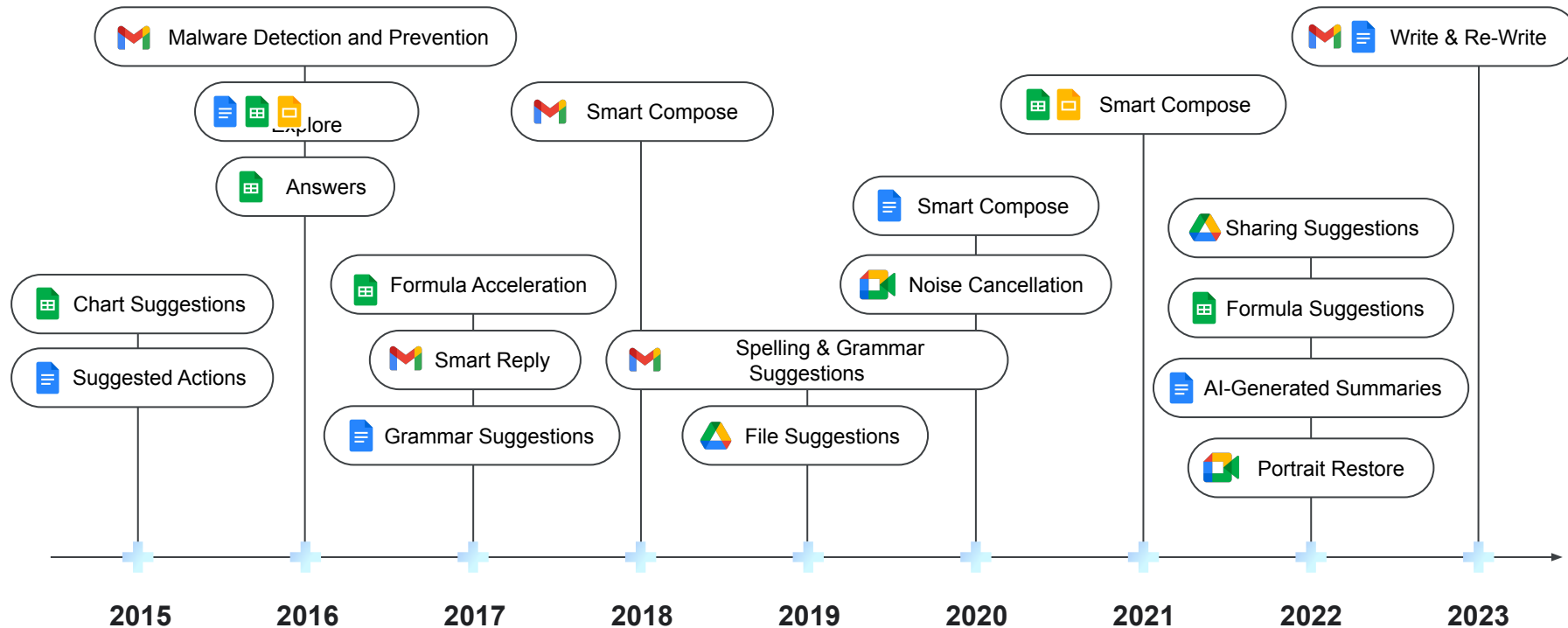
AI systems are taught and trained using computer programming that learns and adapts.

**Kent Walker**

President of Global Affairs, Google & Alphabet



# Google has put AI to work for 3 Billion users in Google Workspace



# AI In Educators lives





## AI in our lives



AI can **never replace** the expertise, knowledge, or creativity of an educator - but it can be a helpful tool to **enhance and enrich** teaching and learning experiences.

Reference: [The Google for Education Guide to AI in Education](#)



# Google's AI Principles

01

Be socially  
beneficial

02

Avoid creating  
or reinforcing  
unfair bias

03

Be built and tested  
for safety

04

Be accountable  
to people

05

Incorporate  
privacy design  
principles

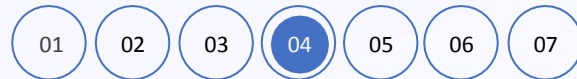
06

Uphold high  
standards of scientific  
excellence

07

Be made available  
for users that accord  
with these principles

In 2018, Google was one of the first companies to establish AI Principles as part of our commitment to developing technology responsibly.



# Meet Gemini

**Gemini**

## What's Gemini?

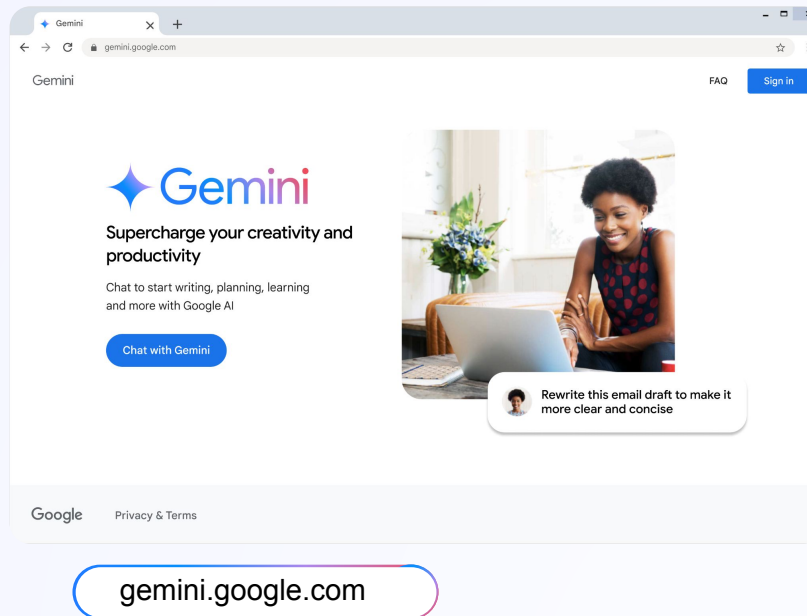
Gemini helps supercharge your creativity and productivity. Chat to start writing, planning, learning and more with Google AI.

## What powers Gemini?

Gemini is powered by a large language model (LLM). LLMs are generative AI models that can predict words that are likely to come next, based on the user's prompt and the text it has generated so far.

## Gemini is widely available

You can chat with Gemini in over **40 languages** and more than **230 countries & territories** — to help you easily collaborate with the best of Google AI





# Start Chatting with Gemini

Here are some simple prompts to get you started

## It is easy to get started with Gemini

1. Visit **[gemini.google.com](https://gemini.google.com)**
2. If you're not already signed in, sign in to your Google Account.
3. In the text box at the bottom, enter your question or prompt.
4. Tap or Click Submit.



### Creativity

Generate 10 highly engaging name ideas for a curriculum project on reducing food waste.



### Productivity

Analyse the effectiveness of this learning outcome and suggest some edits, alternatives or related ideas. "Explain why reducing food waste is important."

Remember, Gemini has limitations and won't always get it right.



## Google Lens in Gemini

You can upload images alongside text in your conversations with Gemini, allowing you to boost your imagination and creativity in completely new ways.

Images are a fundamental part of how we put our imagination to work, so we've added Google Lens to Gemini. Whether you want more information about an image or need inspiration for a funny caption, you now have even more ways to explore and create with Gemini.



Explain this diagram as per grade 8 students

Show thinking

Of course! Let's break down this diagram step-by-step, just like you would in a science class.

### Photosynthesis: How Plants Make Their Own Food!

This picture shows us the amazing process of **photosynthesis**. Think of it as a plant's way of cooking its own food using sunlight. Let's follow the diagram from the top down.

#### 1. The Big Picture: From Leaf to Cell

- **Leaf:** The process starts in the leaves of a plant. Leaves are like the plant's solar panels and kitchen all in one.
- **Plant Cell:** If you zoomed into the leaf with a powerful microscope, you would see tiny rooms called plant cells.
- **Chloroplast:** Inside each plant cell, there are even tinier green structures called **chloroplasts**. This is where the real magic of photosynthesis happens! The green color comes from a pigment called **chlorophyll**, which is excellent at absorbing sunlight.

#### 2. The Ingredients (What the Plant Needs)

Just like a chef needs ingredients, a plant needs three main things for photosynthesis, which the arrows in the diagram show:

- **Light:** From the sun. This is the energy source, like the heat from an oven.
- **Water ( $H_2O$ ):** The plant absorbs this through its roots and it travels up to the leaves.



# Image Generation

## Image Generation in Gemini

You can create captivating images for work,  
play,  
and anything in between  
with Gemini.

It's easy to use - simply enter  
a few words to bring your imagination to  
life, starting with English prompts. Click  
'Generate more' for more options and  
download the ones you like.

Create an image of 5 Indian students (boys and girls) of grade 10 performing a practical in the Chemistry lab.

◆ Here is an image of 5 Indian students performing a practical in the Chemistry lab.



Describe your image



Image x





# How to Write Effective Prompts for Gemini ?

Gemini





## High Quality Prompt

### Components of a High Quality Prompt

01

**Persona / Role**

02

**Task / Steps**

03

**Format / Tone**

04

**Context / Constraints**

05

**Examples**



## High Quality Prompt

### Persona / Role

**Establish the role** you want the chatbot to adopt that is appropriate for your task.

‘You are an experienced mentor to primary teachers.’

### Task / Steps

**Describe in detail what you want assistance with.**

Describe the task in clear and direct language.

It is recommended you break down large tasks into smaller chunks.

### Format / Tone

Include details of how you want the response to be **displayed or formatted**.

- Try asking for different formats: Tables, Bulleted lists, Markdown, etc
- Informal or formal tones, etc.



## Your Turn



[Establish the role you want the Gemini to adopt] [Describe the task in clear and direct language] [Include details of how you want the response to be displayed or formatted] [Include further contextual information] [Describe an example of a great response if you can]

01

02

03

04

05

06

07

# Hands-on Time



## Craft your Prompt

### Category 1: Strategic Planning & School Improvement

- The School's Annual Academic Plan
- A School Policy on Academic Integrity and AI Usage
- A Proposal for a New School-Wide Wellness Program
- Revising the Student Code of Conduct

### Category 3: Staff Management & Development

- A Professional Development Calendar for the Academic Year
- A Mentorship Program Outline for New Teachers
- Interview Questions for a Department Head Position
- A Teacher Observation and Feedback Framework

### Category 2: Curriculum & Academic Oversight

- Designing a New Interdisciplinary Course or Program
- A Plan for Curriculum Mapping within a Department
- Analyzing Annual Examination Data for Actionable Insights
- A Framework for Integrating Project-Based Learning

### Category 4: Parent & Community Communication

- Content Ideas for the Monthly Parent Newsletter
- A Speech for a Major School Event (e.g., Annual Day, Sports Day)
- A Communication Plan for a Crisis or Unexpected Event
- A Formal Letter to Parents Announcing a New Initiative



## Your Turn

**Basic Prompt :** Create a A Professional Development Calendar for the Academic Year

**Advance Prompt :**

Act as an experienced instructional coach and professional development coordinator for K-12 schools in India. You are skilled in designing training that is engaging, relevant, and directly applicable to classroom practice. **Design a comprehensive and motivating professional development calendar for the 2025-2026 academic year. Include months starting from November 2025 till February 2026. The plan must be collaborative in nature and strategically aligned with the school's key goals. Ensure the calendar includes a variety of session types to cater to different staff needs and schedules. A table with columns for: Month (Sept 2025 - Mar 2026), Workshop Title, Key Objectives, Target Audience (e.g., All Staff, HODs, Primary Teachers), and Format (e.g., Full-day, 90-min session). The school key goals for this academic year are to (1) Enhance inquiry-based learning, (2) Integrate technology for personalised feedback, and (3) Support student well-being. All workshops in the calendar must directly support one or more of these goals.**



Canvas

**Scenario:** You are the coordinator for the "Annual Science Fair" and need a quick, simple webpage to share information with students and parents.

**Prompt :**

Act as a web designer. Create the complete professional-looking webpage for our K-12 school's 'Creators Fair 2025.' My school is based out of Bhopal in Madhya Pradesh, India

**The page needs:**

A main title: 'Creators Fair 2025'

A short introductory paragraph.

**Key information listed clearly:**

Date: Saturday, December 25, 2025

Time: 10:00 AM - 3:00 PM

Venue: Senior School Auditorium

Two main sections with headings: 'Rules & Guidelines' and 'Project Categories.'

For the design, use a clean and modern layout with our school colors (blue and white) and make sure it is mobile-friendly.

<https://g.co/gemini/share/7dc1197c79b0>



## Deep Research

**Scenario:** You are the Principal of a well-established CBSE school in New Delhi. You need to prepare a strategic plan to align your school's curriculum and teacher training with India's new National Curriculum Framework (NCF) 2023. This requires more than a simple summary; it needs a comprehensive analysis and an actionable roadmap.

**Prompt:**

Act as an educational policy expert. You are a Principal of a CBSE school in New Delhi and need a strategic plan to implement the NCF 2023 for grades 9-12.

Create a formal Briefing Note for my school board that includes:

**Core Analysis:** An analysis of the NCF's key shifts in multidisciplinary studies, assessment patterns, and the new credit system.

**Implementation Hurdles:** The top three anticipated challenges a school like ours will face.

**Action Plan:** A 3-year, phased implementation roadmap in a table format.

**Teacher Resources:** A short list of essential resources for teacher training.

The tone should be professional, and the content must be actionable.





## Story Book

### What School Leaders Should Create: The Strategic Storybook

As a school leader, you can use AI to create a "Strategic Storybook" as a unique communication tool.

Instead of a simple memo or assembly speech, a story can make abstract ideas tangible and relatable for students, especially in primary and middle school.

**STORYBOOK:** <https://g.co/gemini/share/6f7b2af4096a>



## Create an Image

### What School Leaders Should Create: The Visionary School Leader

For a school leader, the image shouldn't just be decorative; it should represent a strategic vision.

The prompt should therefore create a scene that symbolizes progress, collaboration, and innovation within the specified Indian context.

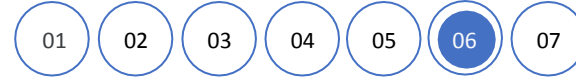
Image: <https://g.co/gemini/share/914443a99dba>



## Prompt Guide

<https://bit.ly/gemini-promptguide>





# Generative AI Certification

# Generative AI for Educators

Generative AI for Educators course is designed to equip teachers with the knowledge and practical skills to leverage AI in their classrooms.

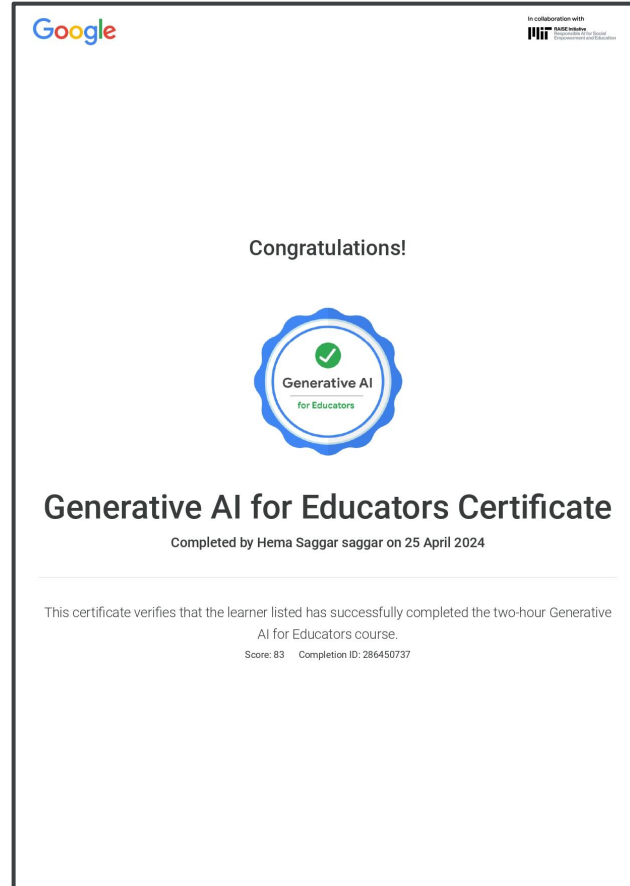
- creating personalized lesson plans
- automating tasks
- engaging students through dynamic content



**Earn a certificate upon completion**



## Certificate



## Generative AI for Educators

